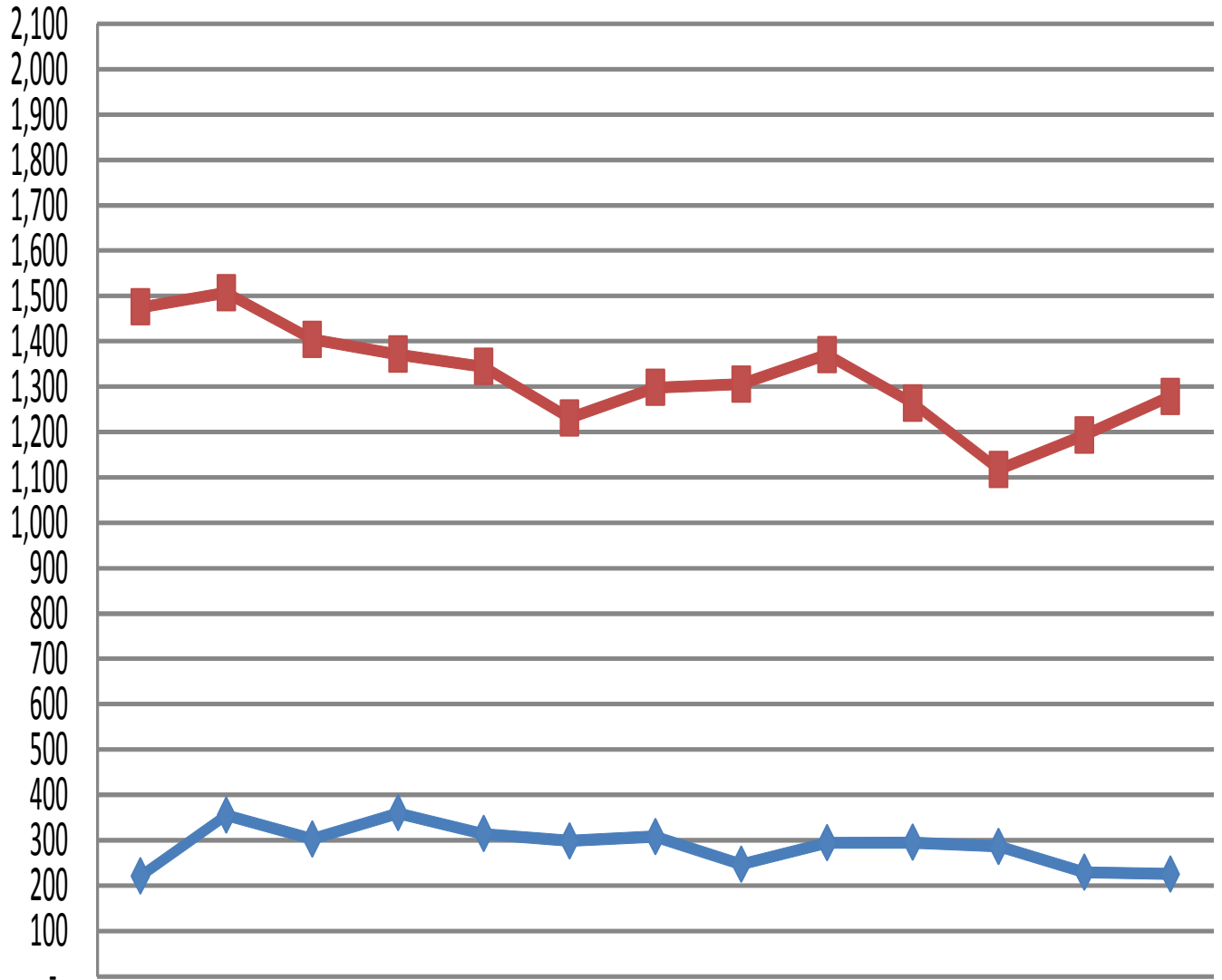


Washington County Single Family Residential Homes Sold & Total Listings

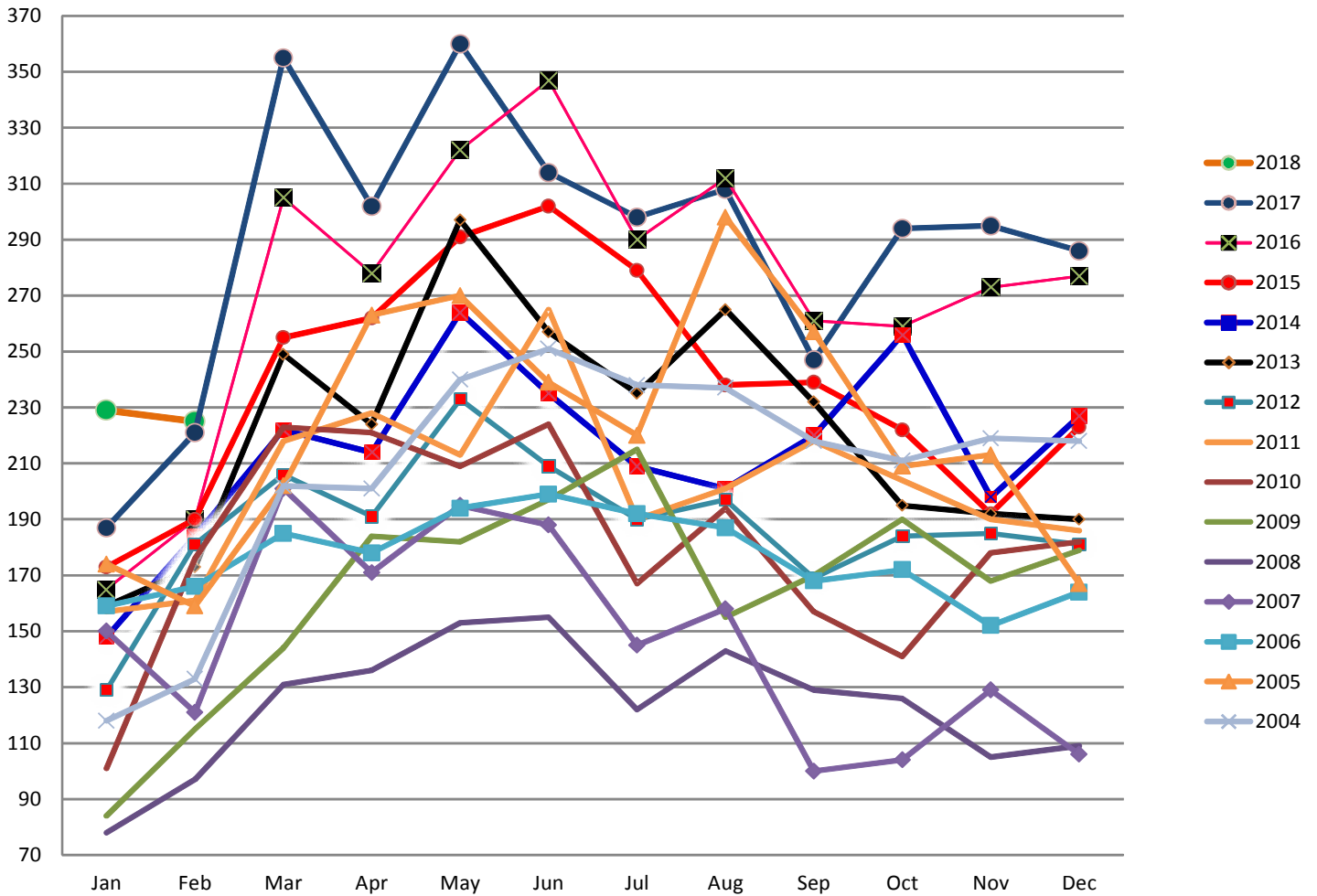
According to the Washington Board of Realtors & does not include Outside Area Numbers.
Also does not include Condo, Townhouse, Modular, Manufactured, Mobile, or New Construction.



	Feb-17	Mar-17	Apr-17	May-17	Jun-17	Jul-17	Aug-17	Sep-17	Oct-17	Nov-17	Dec-17	Jan-18	Feb-18
◆ Homes Sold	221	355	302	360	314	298	308	247	294	295	286	229	225
■ Total Listings	1475	1507	1404	1371	1344	1231	1298	1305	1370	1263	1117	1193	1278

Washington County Single Family Residential Home Sales by Year

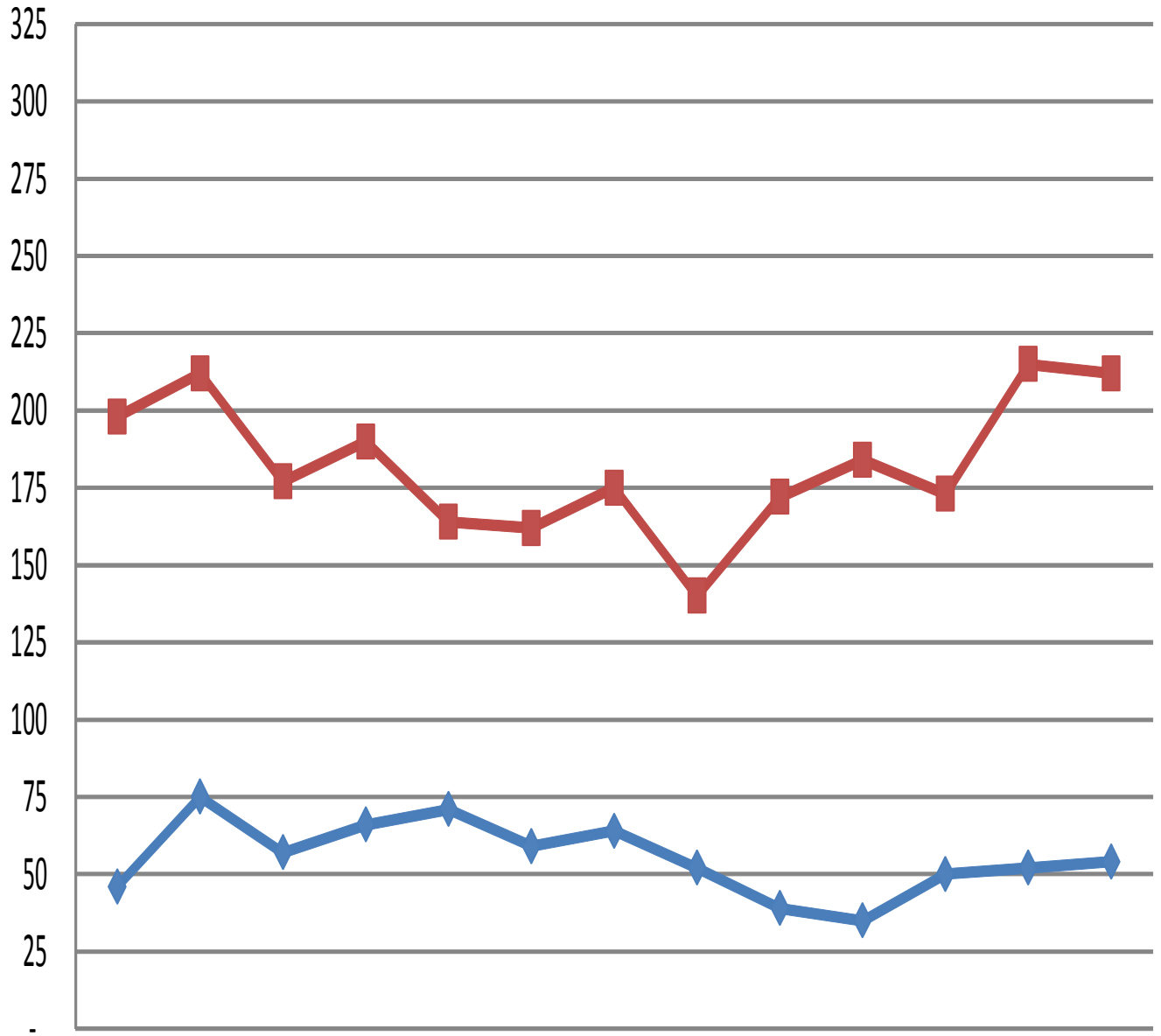
According to the Washington Board of Realtors & does not include Outside Area Numbers.
Also does not include Condo, Townhouse, Modular, Manufactured, Mobile or New Construction.



Home sales by year												
	Jan	Feb	Mar	Apr	May	Jun	Jul	Aug	Sep	Oct	Nov	Dec
2018	229	225										
2017	187	221	355	302	360	314	298	308	247	294	295	286
2016	165	190	305	278	322	347	290	312	261	259	273	277
2015	173	190	255	262	291	302	279	238	239	222	192	223
2014	148	184	222	214	264	235	209	201	220	256	198	227
2013	159	173	249	224	297	257	235	265	232	195	192	190
2012	129	181	206	191	233	209	190	197	169	184	185	181
2011	157	161	218	228	213	265	190	201	218	204	190	186
2010	101	176	223	221	209	224	167	194	157	141	178	182
2009	84	115	144	184	182	197	215	155	170	190	168	179
2008	78	97	131	136	153	155	122	143	129	126	105	109
2007	150	121	201	171	195	188	145	158	100	104	129	106
2006	159	166	185	178	194	199	192	187	168	172	152	164
2005	174	159	202	263	270	239	220	298	257	209	213	167
2004	118	133	202	201	240	251	238	237	218	211	219	218

Washington County Condo/Townhouse Sales & Listings

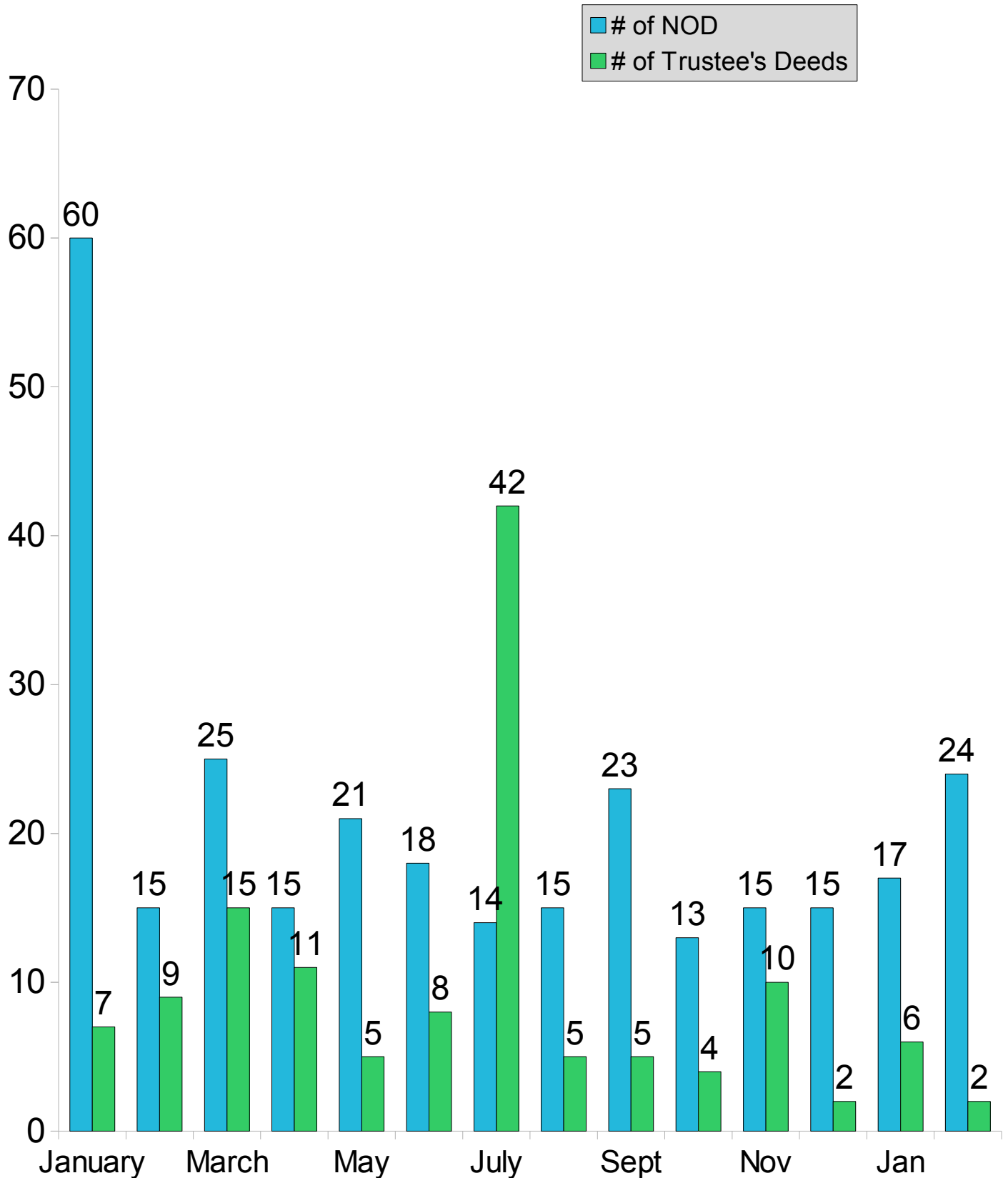
According to the Washington Board of Realtors & does not include Outside Area Numbers.



	Feb-17	Mar-17	Apr-17	May-17	Jun-17	Jul-17	Aug-17	Sep-17	Oct-17	Nov-17	Dec-17	Jan-18	Feb-18
◆ Condo/Townhome Sold	46	75	57	66	71	59	64	52	39	35	50	52	54
■ Condo/Townhome Listings	198	212	177	190	164	162	175	140	172	184	173	215	212

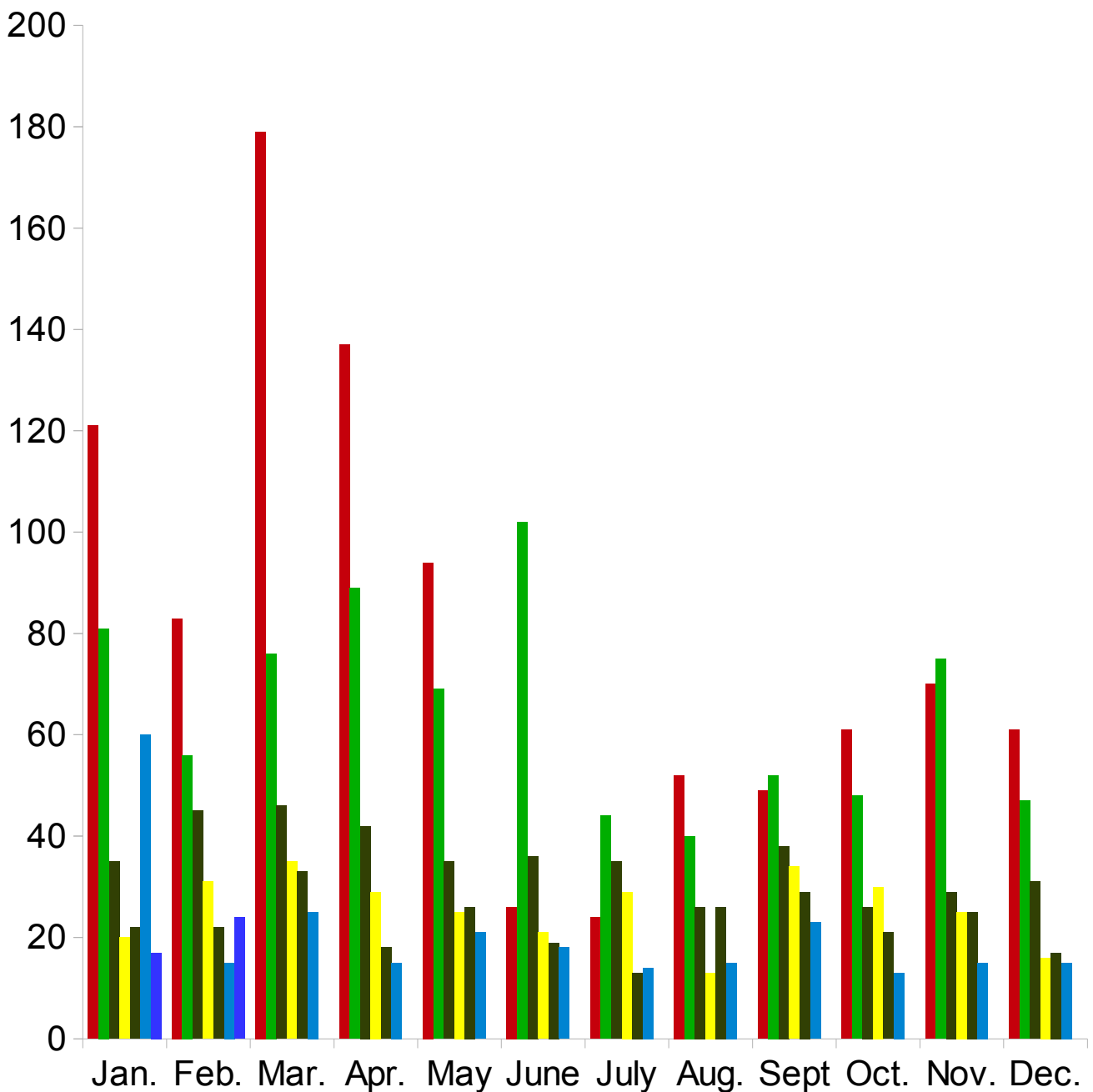
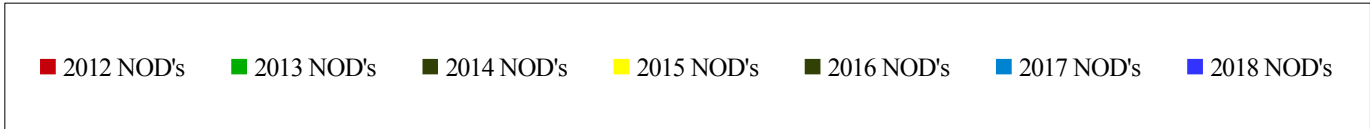
Washington County Notice of Defaults & Trustee's Deeds Per Month

From Jan. 1, 2017 to Feb 28, 2018 according to Washington County Records as researched by Invest Title Services, Inc.



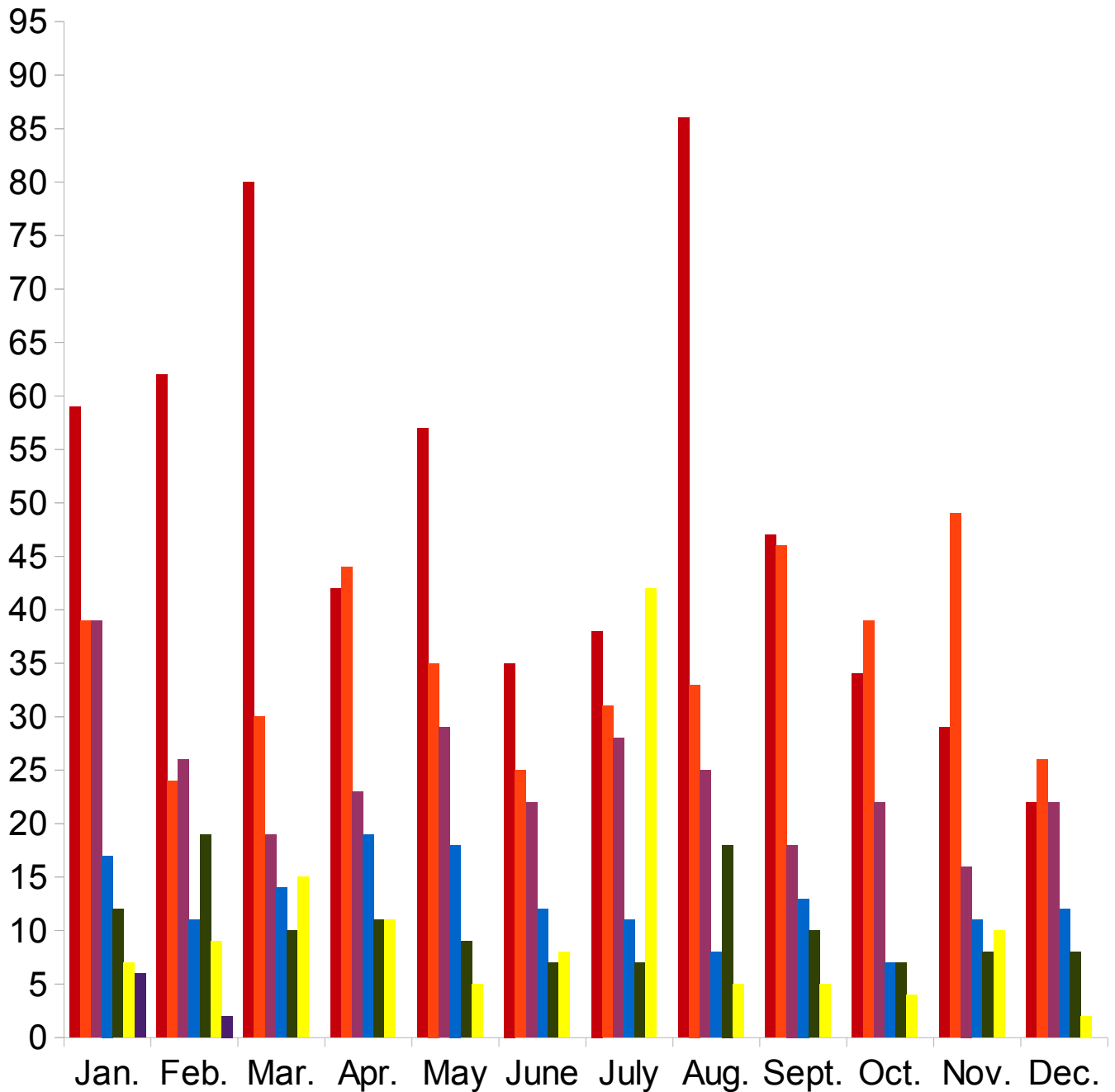
Washington County Notice of Defaults by Year

From Jan. 1, 2012 to Feb 28, 2018 according to Washington County Records as researched by Invest Title Services, Inc.



Washington County Trustee's Deeds by Year

From Jan. 1, 2010 to Feb 28, 2018 according to Washington County Records as researched by Invest Title Services, Inc.



Southwestern Utah Building Permit Summary

From Jan. 1, 2018 to Mar 14, 2018 (permits over \$10,000) according to
The Southwestern Utah Construction Monitor

<i>Residential</i>	<i>Permits</i>	<i>Value</i>	<i>Units</i>
Single Family Homes	495	\$101,617,696	507
Other	266	\$17,775,672	99
Total	761	\$119,393,368	606

<i>Commercial</i>	<i>Permits</i>	<i>Value</i>	<i>Units</i>
Offices/Banks/R&D Professional	1	\$222,000	0
Retail/Dining/Personal Care	1	\$750,000	0
Public Buildings & Projects	0	\$0	0
Other	64	\$18,471,204	0
Total	66	\$19,443,204	0

Top 25 Southwestern Utah Home Builders

From Jan. 1, 2018 to Feb 28, 2018 according to The
Southwestern Utah Construction Monitor

<i>Builder</i>	<i>Homes</i>	<i>Total Value of Construction Permits</i>
1-Salisbury Homes	43	\$7,437,917.00
2- Jack Fisher Construction of So Utah	51	\$6,663,428.00
3-Ence Homes	36	\$6,300,087.00
4-Ivory Homes	17	\$3,650,700.00
5-S&S Homes	8	\$2,843,862.00
6- American Heritage Homes	9	\$2,104,097.00
7-Sullivan Homes	12	\$1,952,008.00
8-Sun River Construction	15	\$1,930,000.00
9-Perry Homes	12	\$1,905,939.00
10-Anderson Custom Homes	3	\$1,885,465.00
11-Taylor Built Homes	5	\$1,333,000.00
12-Dan Hoopes Construction Inc	7	\$1,284,879.00
13-Greg Ence Construction	3	\$1,103,640.00
14-Simister Homes	4	\$1,043,742.00
15-AJ Construction	4	\$1,032,000.00
16-Doug Hunt Construction Inc	1	\$800,000.00
17- Circle A Builders	1	\$777,512.00
18-Enhanced Home Builders	4	\$762,445.00
19-Premier Development	3	\$747,304.00
20-Rural Housing Development Corp	3	\$732,000.00
21 - New Trend Construction	3	\$716,102.00
22- Rock Solid Builders	3	\$691,775.00
23-Custom Contracting Corp	3	\$647,665.00
24-Von Euw Construction	1	\$627,045.00
25-Bradshaw Homes	2	\$618,935.00

Subdivided Lots

From Feb 1, 2018 to Feb 28, 2018 according to Washington
County Realtors Assoc.

<i>Area</i>	<i># Sold</i>	<i>Avg. Sale Price</i>	<i>Total Active</i>	<i>Days On Market</i>
Greater St. George	34	\$179,485.00	516	211
Hurricane Valley	15	\$70,728.00	130	194
Zion Park	1	\$250,000.00	48	375
Northwest County	1	\$53,000.00	55	321
Northeast County	2	\$73,500.00	16	231
Outside County	6	\$62,217.00	263	260

From Jan. 1, 2018 to Feb 28, 2018 according to Washington
County Realtors Assoc.

<i>Area</i>	<i># Sold</i>	<i>Avg. Sale Price</i>	<i>Total Active</i>	<i>Days On Market</i>
Greater St. George	56	\$189,816.00	618	212
Hurricane Valley	28	\$72,543.00	166	191
Zion Park	3	\$118,667.00	52	379
Northwest County	5	\$76,600.00	58	307
Northeast County	3	\$66,667.00	20	215
Outside County	11	\$44,491.00	273	256

Land/Acreage Sold

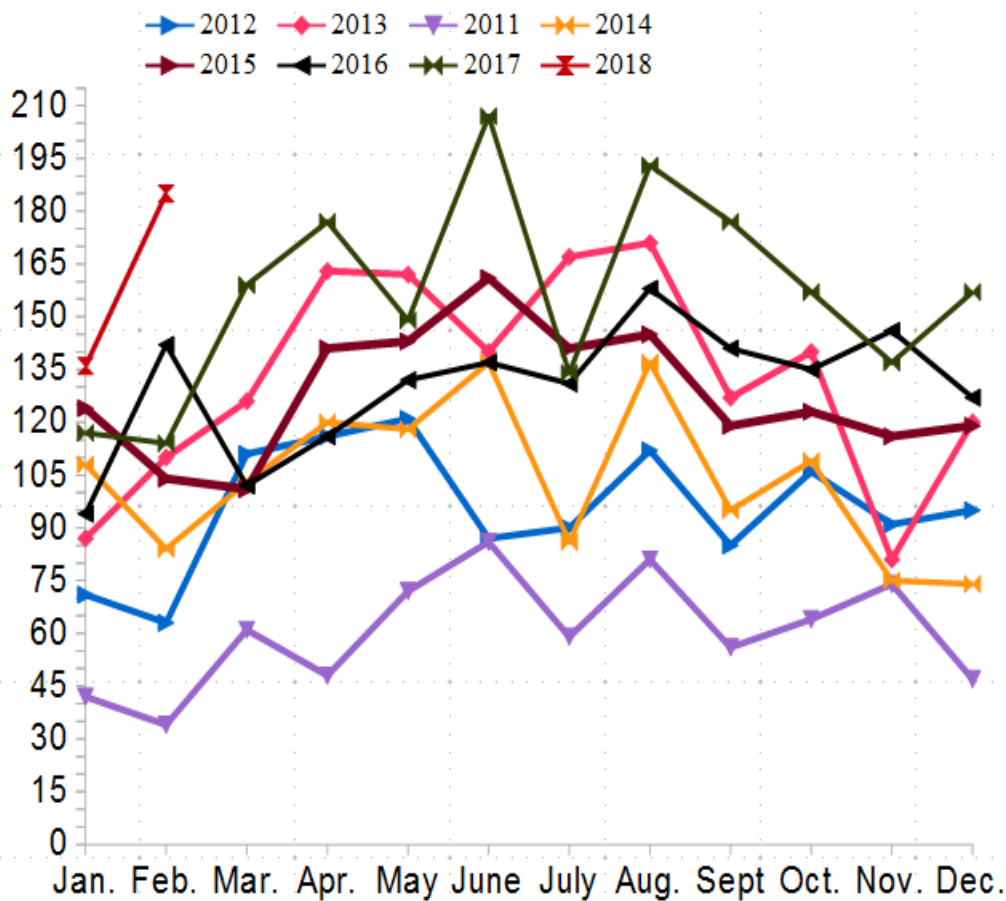
From Feb 1, 2018 to Feb 28, 2018 according to Washington
County Realtors Assoc.

<i>Area</i>	<i># Sold</i>	<i>Avg. Sale Price</i>	<i>Total Active</i>	<i>Days On Market</i>
Greater St. George	5	\$164,217.00	99	263
Hurricane Valley	2	\$162,500.00	81	249
Zion Park	0	\$0.00	25	395
Northwest County	1	\$16,900.00	47	289
Northeast County	4	\$98,700.00	26	140
Outside County	6	\$63,062.00	352	339

From Jan. 1, 2018 to Feb 28, 2018 according to Washington
County Realtors Assoc.

<i>Area</i>	<i># Sold</i>	<i>Avg. Sale Price</i>	<i>Total Active</i>	<i>Days On Market</i>
Greater St. George	10	\$299,373.00	110	246
Hurricane Valley	6	\$151,167.00	57	233
Zion Park	1	\$375,000.00	32	288
Northwest County	4	\$63,975.00	52	285
Northeast County	6	\$102,433.00	41	164
Outside County	16	\$74,148.00	344	340

Single Family Home Permits for Washington County per the Southwest Utah Construction Monitor



	2012	2013	2011	2014	2015	2016	2017	2018
Categories	Y-Values	Y-Values	Y-Values	Y-Values	Y-Values	Y-Values	Y-Values	Y-Values
Jan.	71	87	42	108	124	94	117	136
Feb.	63	110	34	84	104	142	114	185
Mar.	111	126	61	103	101	102	159	
Apr.	116	163	48	120	141	116	177	
May	121	162	72	118	143	132	149	
June	87	140	86	137	161	137	207	
July	90	167	59	86	141	131	134	
Aug.	112	171	81	137	145	158	193	
Sept.	85	127	56	95	119	141	177	
Oct.	106	140	64	109	123	135	157	
Nov.	91	81	74	75	116	146	137	
Dec.	95	120	47	74	119	127	157	