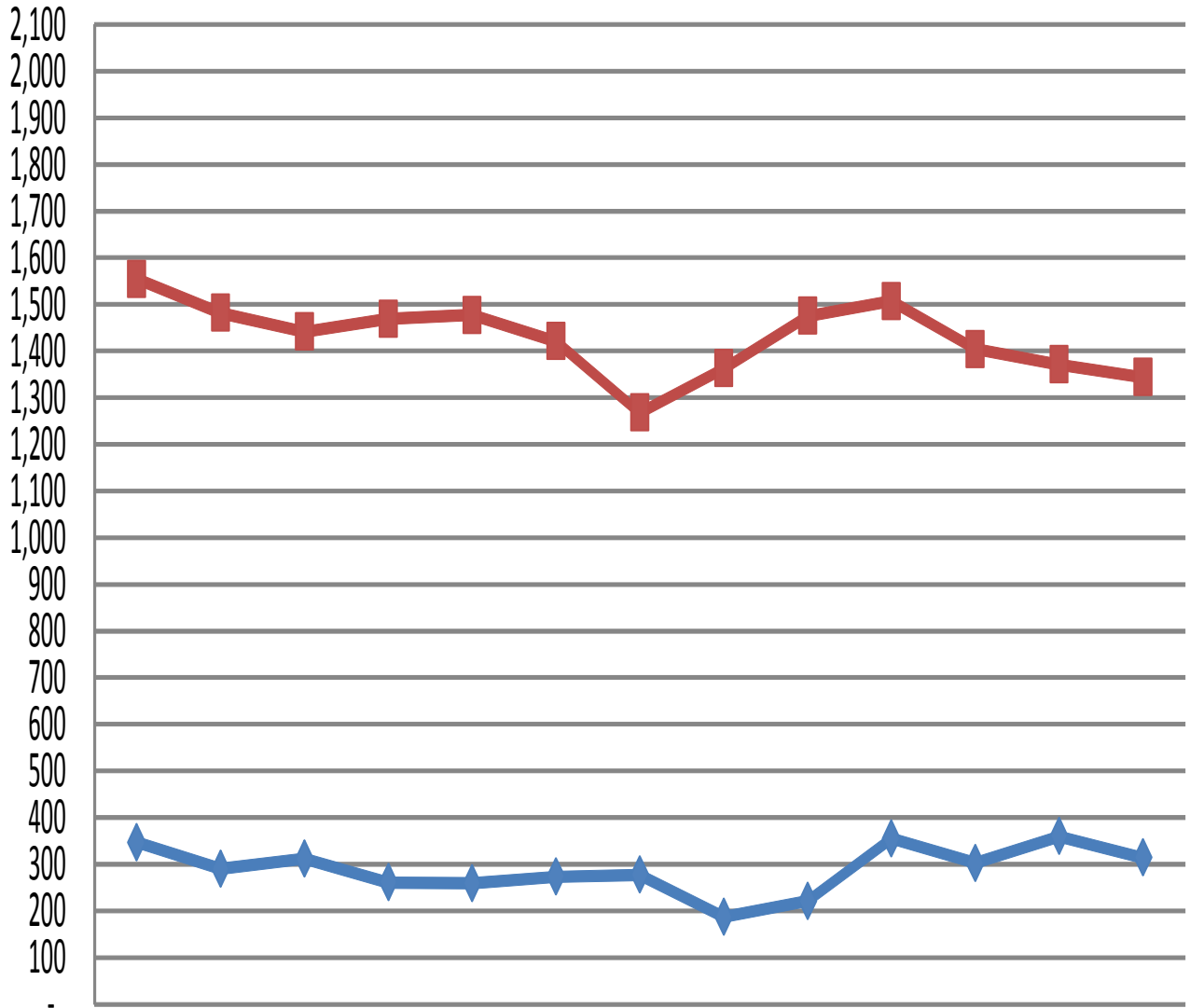


Washington County Single Family Residential Homes Sold & Total Listings

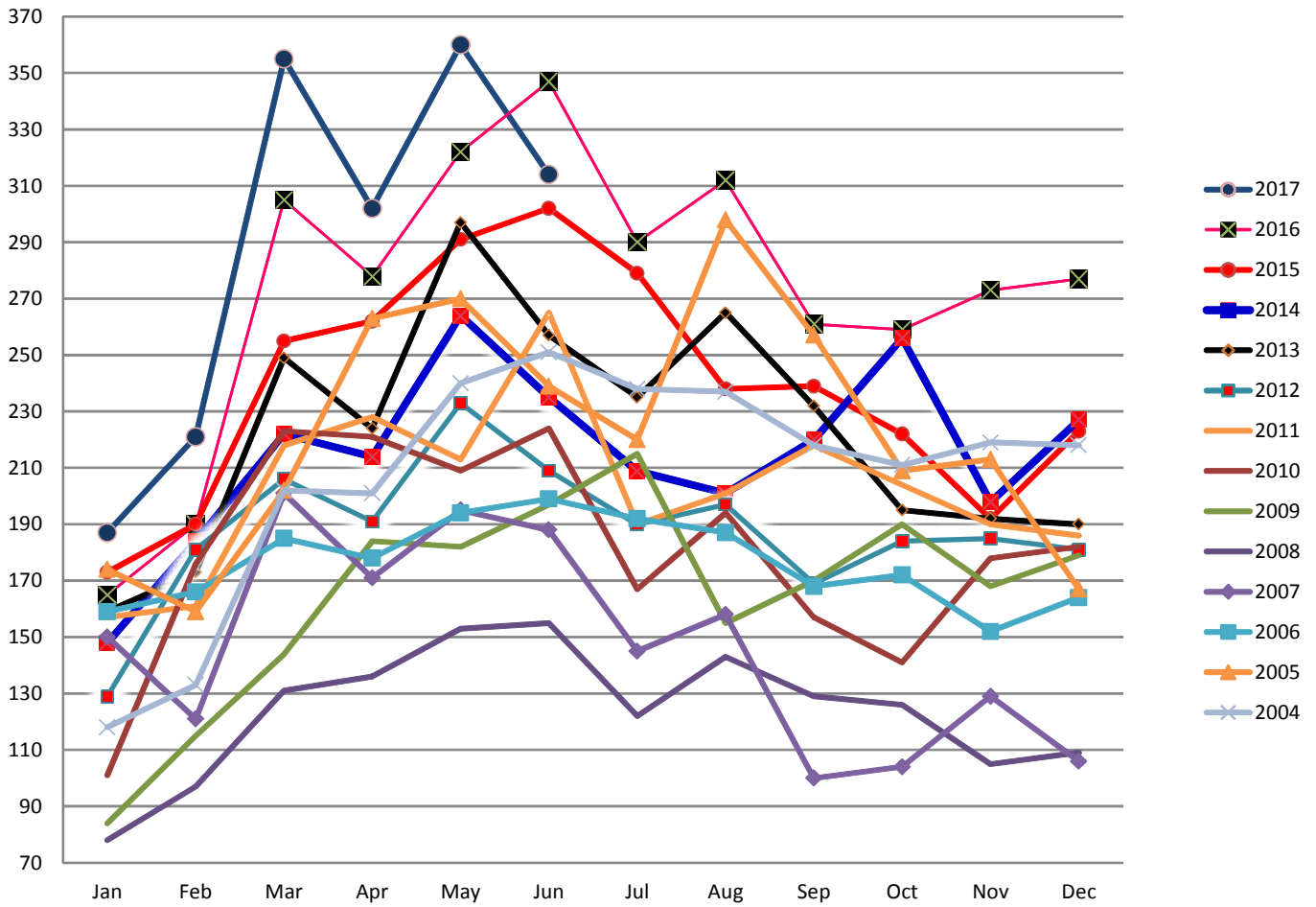
According to the Washington Board of Realtors & does not include Outside Area Numbers.
Also does not include Condo, Townhouse, Modular, Manufactured, Mobile, or New Construction.



	Jun-16	Jul-16	Aug-16	Sep-16	Oct-16	Nov-16	Dec-16	Jan-17	Feb-17	Mar-17	Apr-17	May-17	Jun-17
◆ Homes Sold	347	290	312	261	259	273	277	187	221	355	302	360	314
■ Total Listings	1554	1482	1441	1469	1477	1421	1268	1363	1475	1507	1404	1371	1344

Washington County Single Family Residential Home Sales by Year

According to the Washington Board of Realtors & does not include Outside Area Numbers.
Also does not include Condo, Townhouse, Modular, Manufactured, Mobile or New Construction.

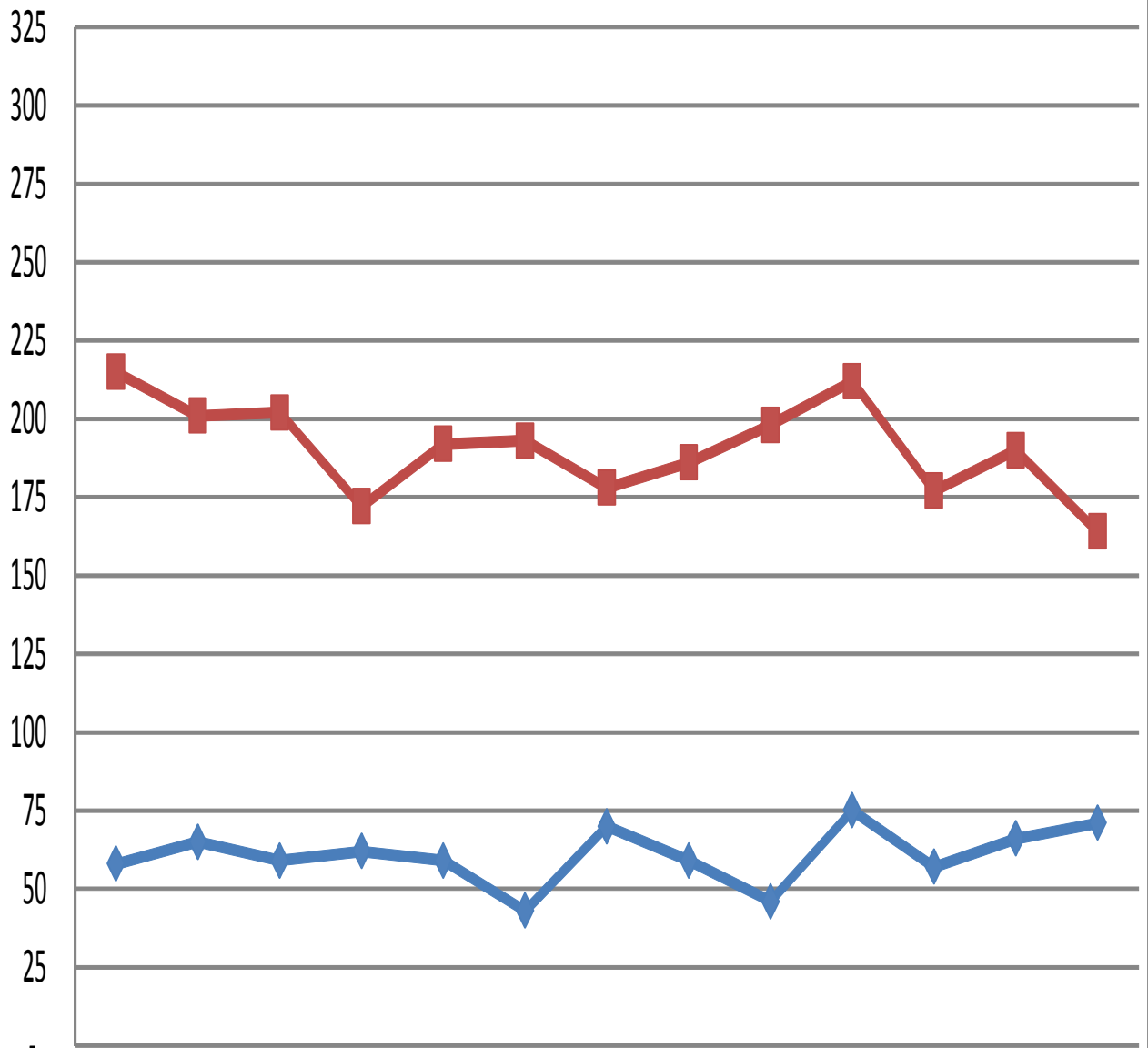


Home sales by year

	Jan	Feb	Mar	Apr	May	Jun	Jul	Aug	Sep	Oct	Nov	Dec
2017	187	221	355	302	360	314						
2016	165	190	305	278	322	347	290	312	261	259	273	277
2015	173	190	255	262	291	302	279	238	239	222	192	223
2014	148	184	222	214	264	235	209	201	220	256	198	227
2013	159	173	249	224	297	257	235	265	232	195	192	190
2012	129	181	206	191	233	209	190	197	169	184	185	181
2011	157	161	218	228	213	265	190	201	218	204	190	186
2010	101	176	223	221	209	224	167	194	157	141	178	182
2009	84	115	144	184	182	197	215	155	170	190	168	179
2008	78	97	131	136	153	155	122	143	129	126	105	109
2007	150	121	201	171	195	188	145	158	100	104	129	106
2006	159	166	185	178	194	199	192	187	168	172	152	164
2005	174	159	202	263	270	239	220	298	257	209	213	167
2004	118	133	202	201	240	251	238	237	218	211	219	218

Washington County Condo/Townhouse Sales & Listings

According to the Washington Board of Realtors & does not include Outside Area Numbers.

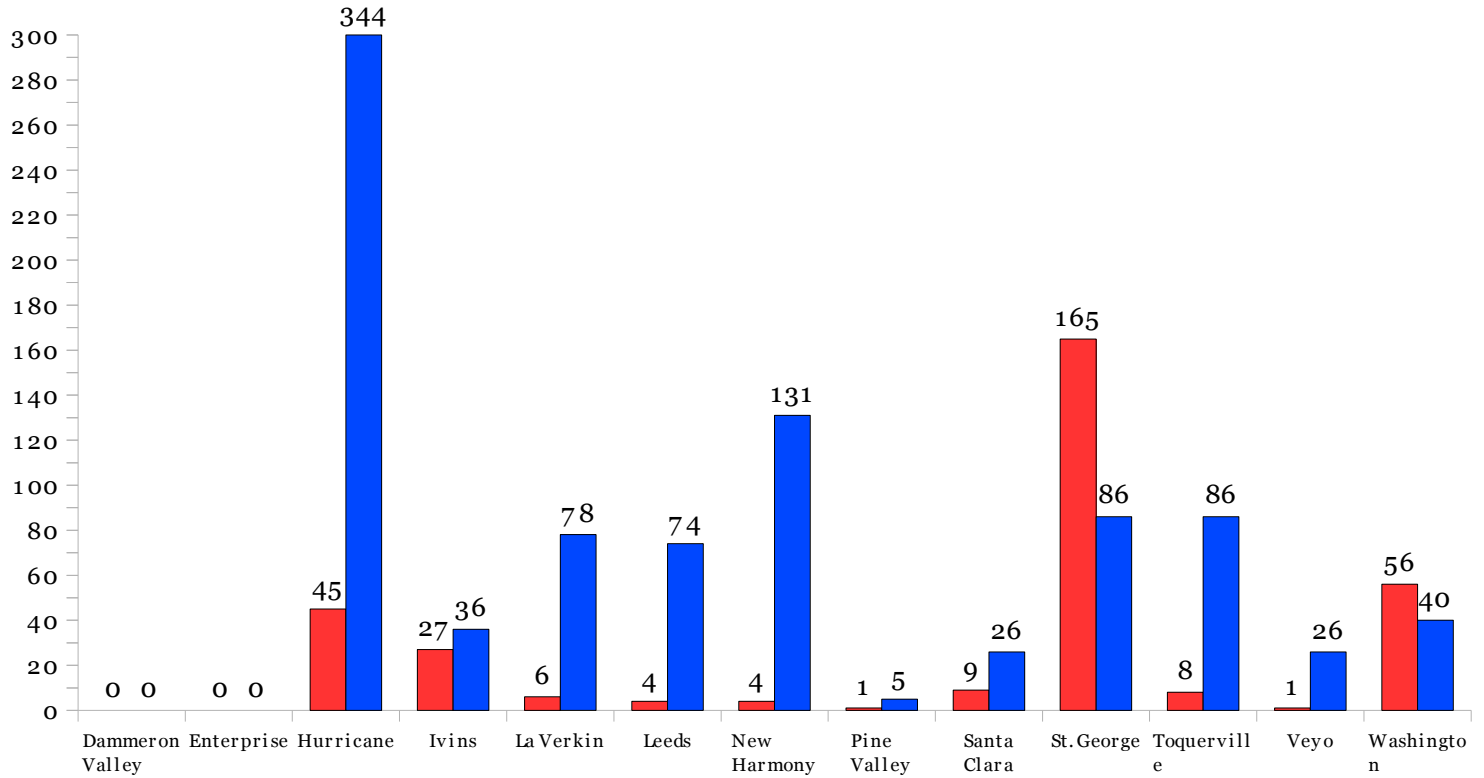


	Jun-16	Jul-16	Aug-16	Sep-16	Oct-16	Nov-16	Dec-16	Jan-17	Feb-17	Mar-17	Apr-17	May-17	Jun-17
◆ Condo/Townhome Sold	58	65	59	62	59	43	70	59	46	75	57	66	71
■ Condo/Townhome Listings	215	201	202	172	192	193	178	186	198	212	177	190	164

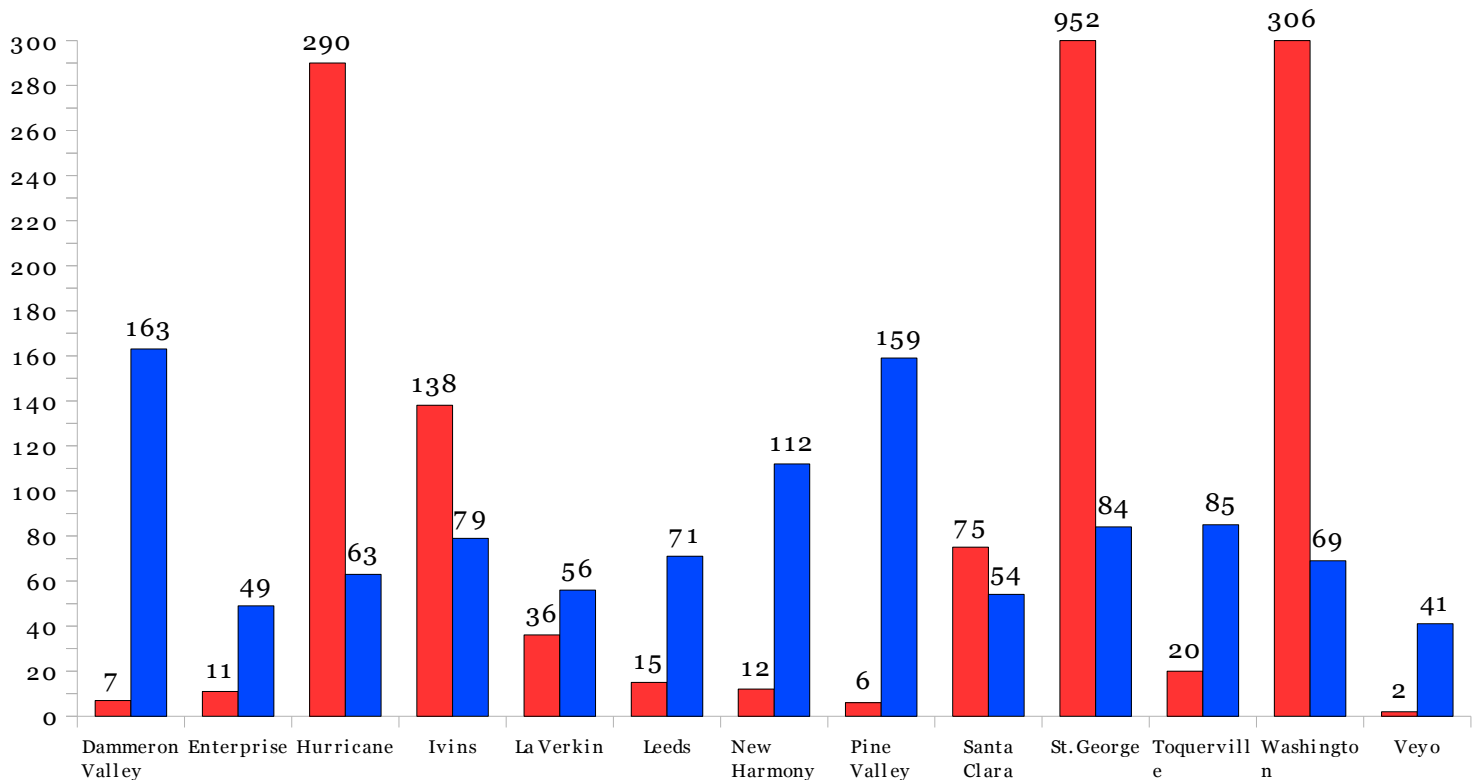
Statistical Market Analysis of Homes Sold

■ # of Homes Sold ■ Average Days on the Market

From June 1, 2017 to June 30, 2017 according to Washington County Realtors Assoc.

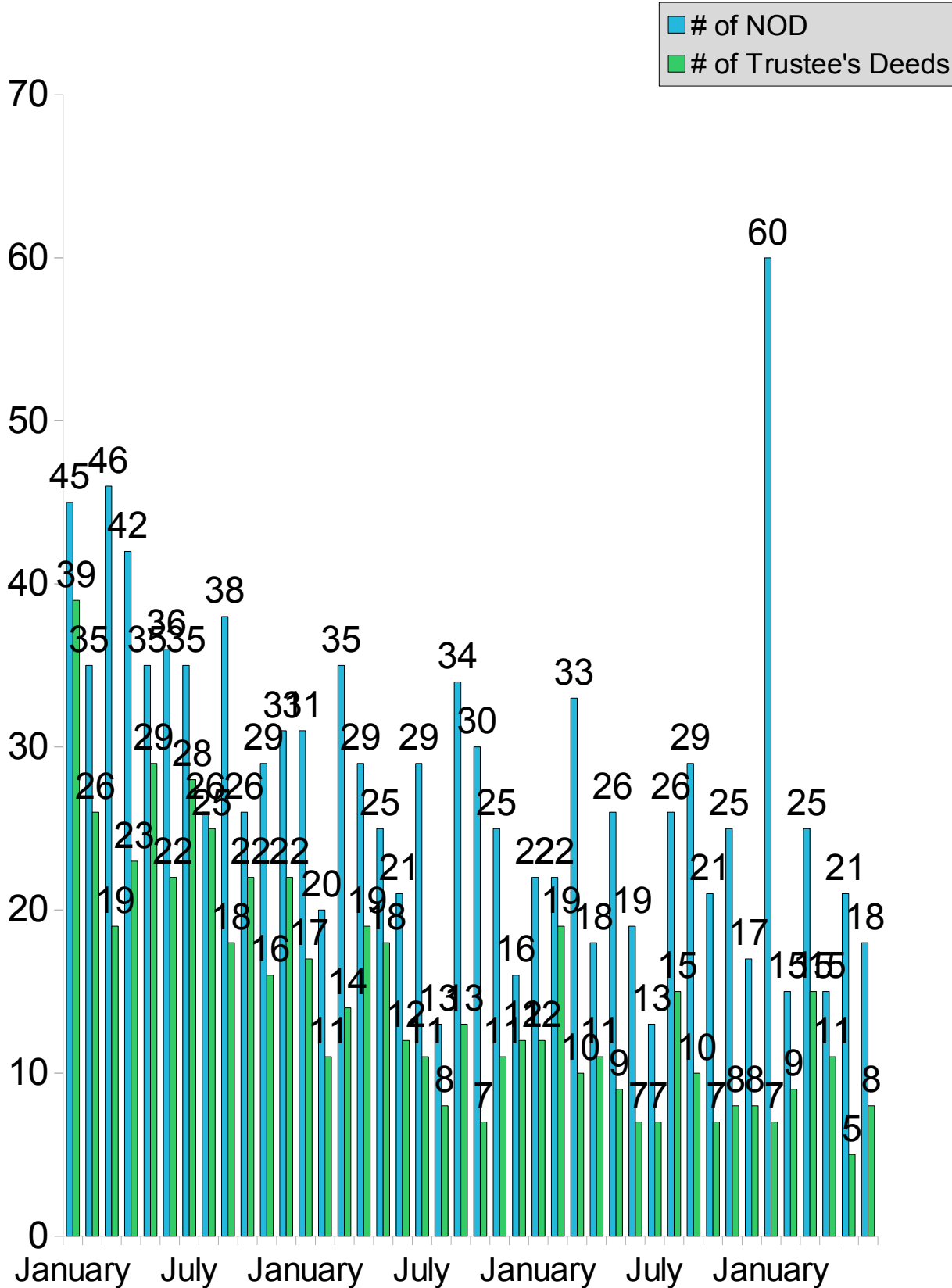


From Jan. 1, 2017 to June 30, 2017 according to Washington County Realtors Assoc.



Washington County Notice of Defaults & Trustee's Deeds Per Month

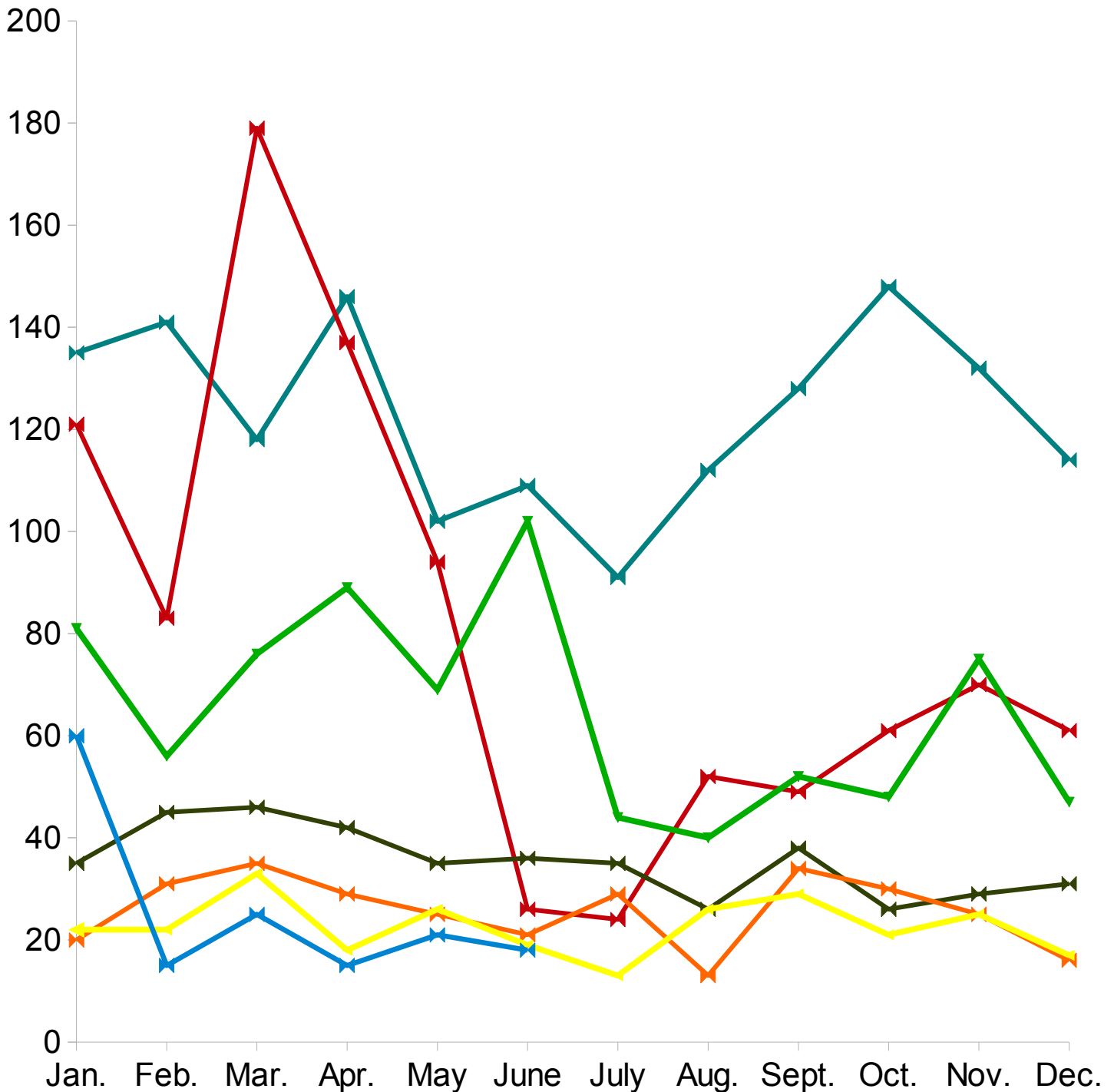
From Jan. 1, 2014 to June 30, 2017 according to Washington County Records as researched by Invest Title Services, Inc.



Washington County Notice of Defaults by Year

From Jan. 1, 2011 to June 30, 2017 according to Washington County Records as researched by Invest Title Services, Inc.

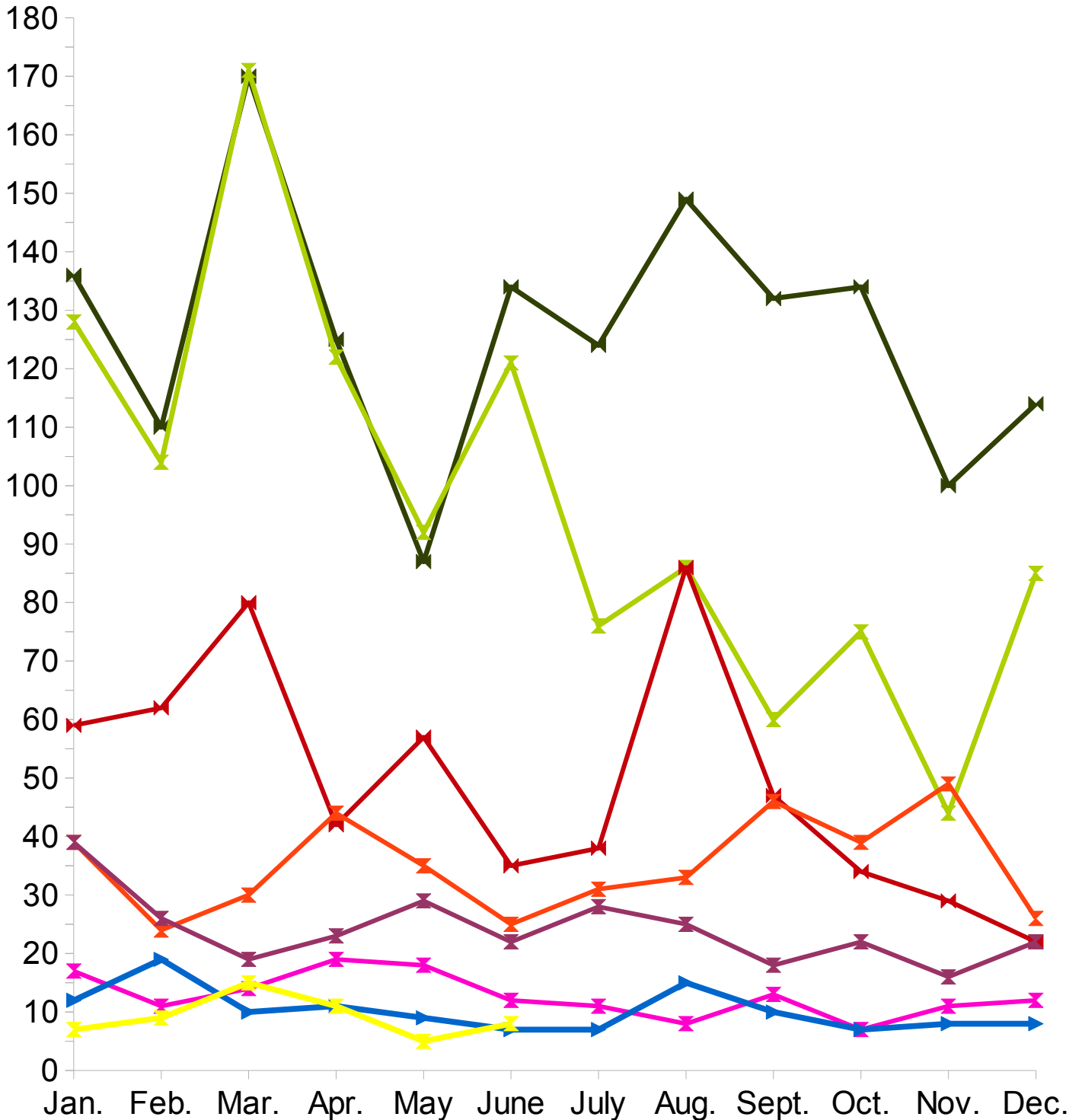
◆ 2011 NOD's
 ◆ 2012 NOD's
 ◆ 2013 NOD's
 ◆ 2014 NOD's
 ◆ 2015 NOD's
 Linear (2015 NOD's)
 ◆ 2016 NOD's



Washington County Trustee's Deeds by Year

From Jan. 1, 2010 to June 30, 2017 according to Washington County Records as researched by Invest Title Services, Inc.

- 2010 Trustees
- 2011 Trustees
- 2012 Trustees
- 2013 Trustees
- 2014 Trustees
- 2015 Trustees
- Linear (2015 Trustees)
- 2016 Trustees Deeds
- 2017 Trustee's Deeds



Southwestern Utah Building Permit Summary

From Jan. 1, 2017 to July 12, 2017 (permits over \$10,000) according to
The Southwestern Utah Construction Monitor

<i>Residential</i>	<i>Permits</i>	<i>Value</i>	<i>Units</i>
Single Family Homes	1298	\$256,006,065	1304
Other	863	\$44,071,407	345
Total	2161	\$300,077,472	1649

<i>Commercial</i>	<i>Permits</i>	<i>Value</i>	<i>Units</i>
Offices/Banks/R&D Professional	0	\$0	0
Retail/Dining/Personal Care	3	\$4,074,680	0
Public Buildings & Projects	1	\$1,900,000	0
Other	143	\$47,138,064	0
Total	147	\$53,112,744	0

Top 25 Southwestern Utah Home Builders

From Jan. 1, 2017 to July 12, 2017 according to The Southwestern Utah Construction Monitor

<i>Builder</i>	<i>Homes</i>	<i>Total Value of Construction Permits</i>
1-Salisbury Homes	109	\$18,226,432.00
2- Ence Homes	84	\$14,822,411.00
3-Alex Meisner	40	\$8,023,979.00
4-Henry Walker Homes	43	\$7,640,342.00
5-New Trend	29	\$7,083,149.00
6- Ivory Homes	37	\$6,817,527.00
7-Perry Homes Utah Inc.	33	\$5,770,683.00
8-Rock Tite Construction	28	\$5,613,301.00
9-Sun River Construction	41	\$5,022,000.00
10-S&S Construction	27	\$4,639,061.00
11-MLF Construction	18	\$4,108,484.00
12-Sullivan Homes	25	\$4,013,337.00
13-Van Guilder Homes	15	\$3,699,570.00
14-Split Rock Custom Homes	16	\$3,110,840.00
15-Rock Solid Builders	18	\$3,075,209.00
16-Velocity Homes	14	\$2,992,980.00
17- Custom Contracting Corp	14	\$2,694,030.00
18-Desert Sky Homes	7	\$2,686,107.00
19-DVB Construction	13	\$2,618,235.00
20-JT Custom Homes	6	\$2,239,210.00
21- Dennis Garr Construction	16	\$2,160,000.00
22-AJ Construction	7	\$2,062,000.00
23-Interstate Homes	12	\$2,048,600.00
24-Jake Hulet Construction	8	\$2,047,314.00
25-Gemstone Homes	18	\$1,978,350.00

Subdivided Lots

From June 1, 2017 to June 30, 2017 according to Washington
County Realtors Assoc.

<i>Area</i>	<i># Sold</i>	<i>Avg. Sale Price</i>	<i>Total Active</i>	<i>Days On Market</i>
Greater St. George	23	\$186,439.00	553	249
Hurricane Valley	13	\$103,277.00	133	149
Zion Park	2	\$57,500.00	76	178
Northwest County	8	\$35,275.00	72	243
Northeast County	8	\$62,188.00	32	224
Outside County	13	\$56,634.00	255	257

From Jan. 1, 2017 to June 30, 2017 according to Washington
County Realtors Assoc.

<i>Area</i>	<i># Sold</i>	<i>Avg. Sale Price</i>	<i>Total Active</i>	<i>Days On Market</i>
Greater St. George	180	\$143,593.00	968	233
Hurricane Valley	71	\$72,062.00	281	164
Zion Park	10	\$110,462.00	136	157
Northwest County	18	\$52,928.00	84	231
Northeast County	18	\$75,206.00	61	246
Outside County	66	\$34,500.00	368	258

Land/Acreage Sold

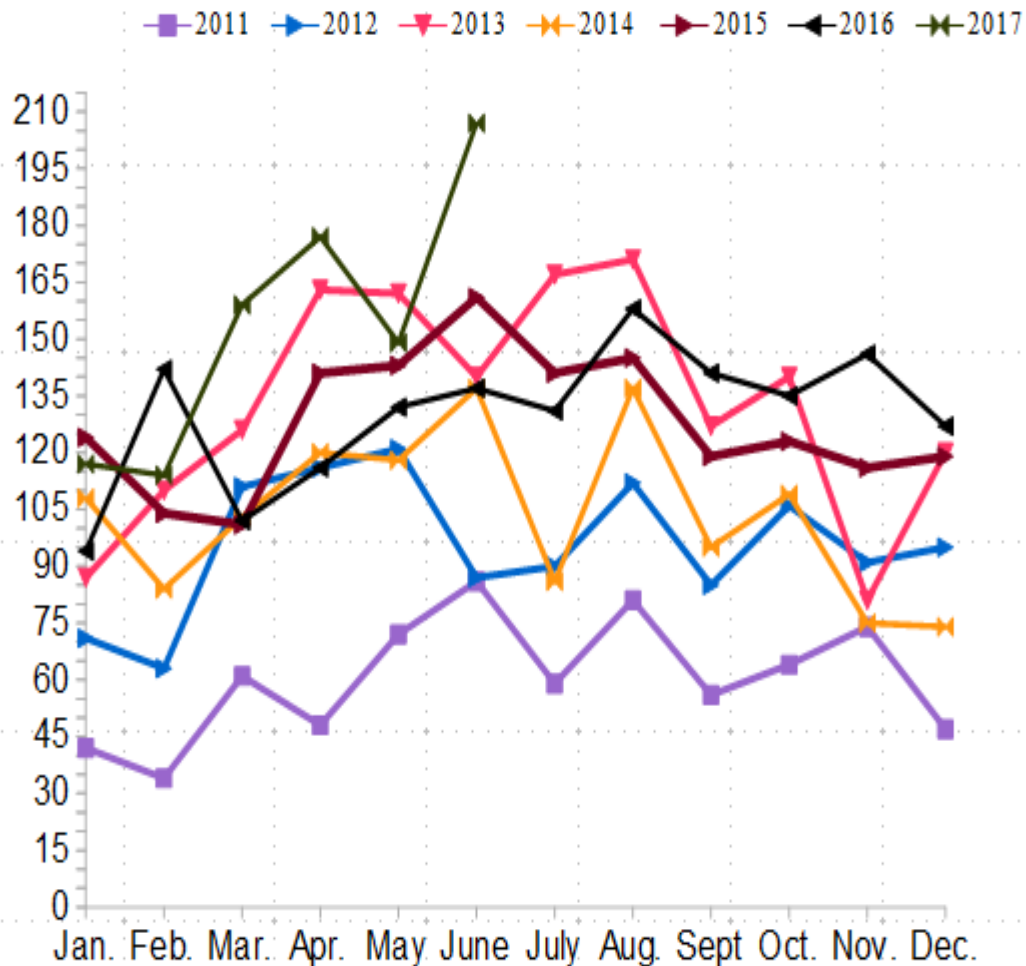
From May 1, 2017 to June 30, 2017 according to Washington
County Realtors Assoc.

<i>Area</i>	<i># Sold</i>	<i>Avg. Sale Price</i>	<i>Total Active</i>	<i>Days On Market</i>
Greater St. George	5	\$250,960.00	111	288
Hurricane Valley	3	\$159,333.00	69	262
Zion Park	0	\$0.00	25	417
Northwest County	0	\$0.00	49	216
Northeast County	2	\$138,500.00	23	225
Outside County	11	\$74,773.00	373	308

From Jan. 1, 2017 to June 30, 2017 according to Washington
County Realtors Assoc.

<i>Area</i>	<i># Sold</i>	<i>Avg. Sale Price</i>	<i>Total Active</i>	<i>Days On Market</i>
Greater St. George	40	\$164,808.00	186	246
Hurricane Valley	36	\$156,350.00	137	218
Zion Park	3	\$378,967.00	33	375
Northwest County	7	\$29,243.00	74	228
Northeast County	13	\$174,208.00	44	227
Outside County	46	\$42,749.00	517	318

Single Family Home Permits for Washington County per the Southwest Utah Construction Monitor



	2011	2012	2013	2014	2015	2016	2017
Categories	Y-Values	Y-Values	Y-Values	Y-Values	Y-Values	Y-Values	Y-Values
Jan.	42	71	87	108	124	94	117
Feb.	34	63	110	84	104	142	114
Mar.	61	111	126	103	101	102	159
Apr.	48	116	163	120	141	116	177
May	72	121	162	118	143	132	149
June	86	87	140	137	161	137	207
July	59	90	167	86	141	131	
Aug.	81	112	171	137	145	158	
Sept.	56	85	127	95	119	141	
Oct.	64	106	140	109	123	135	
Nov.	74	91	81	75	116	146	
Dec.	47	95	120	74	119	127	