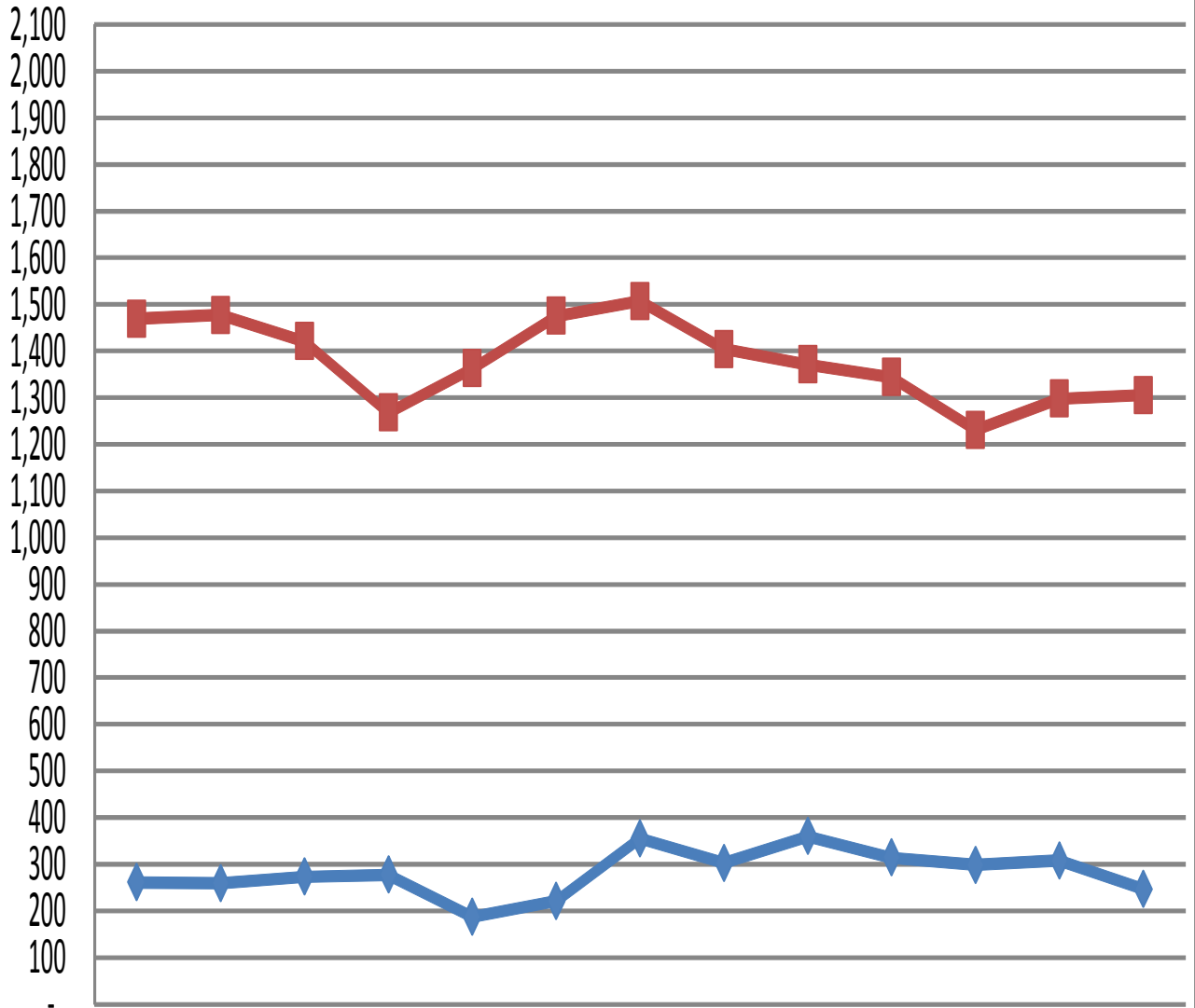


# Washington County Single Family Residential Homes Sold & Total Listings

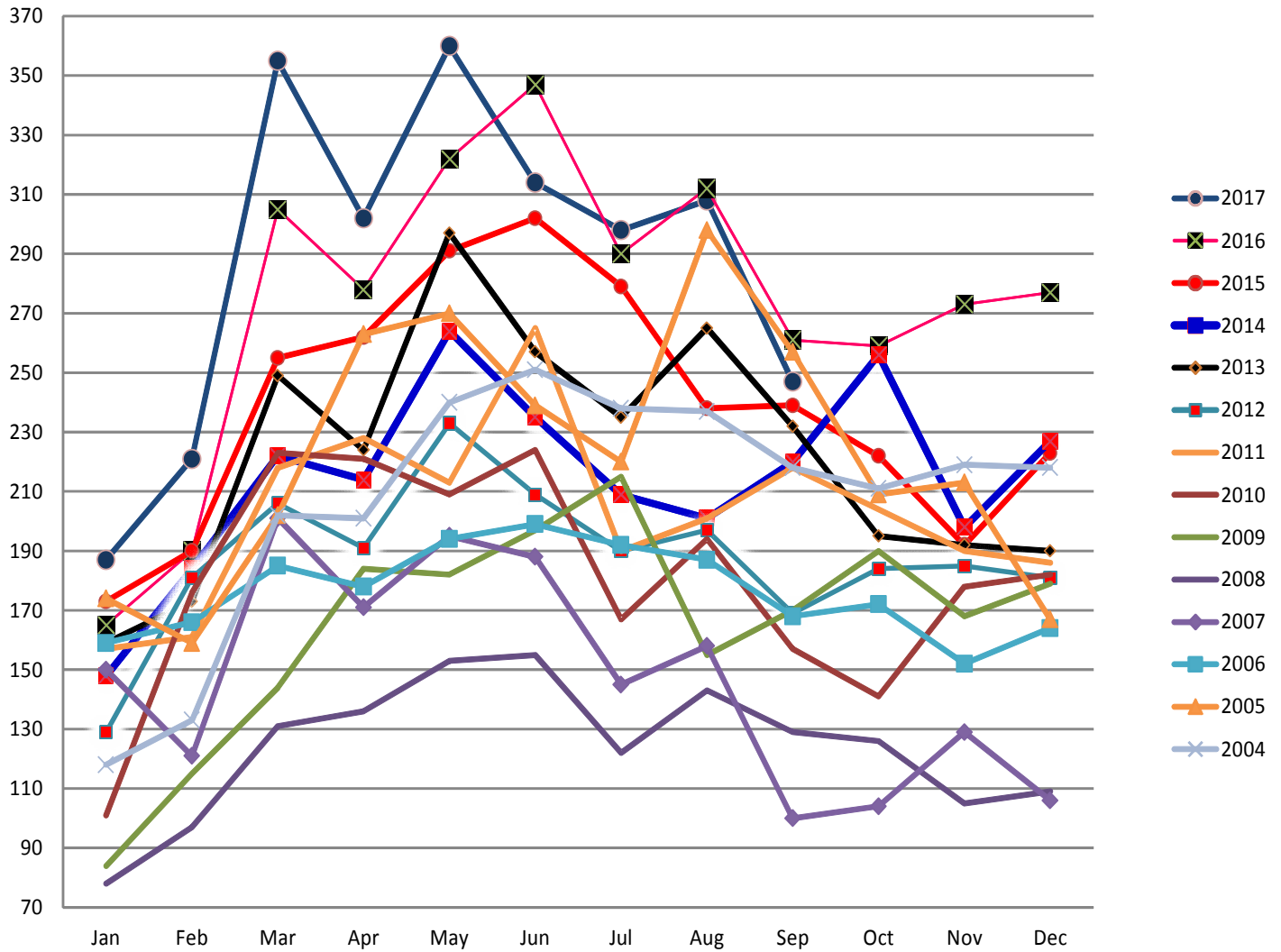
According to the Washington Board of Realtors & does not include Outside Area Numbers.  
Also does not include Condo, Townhouse, Modular, Manufactured, Mobile, or New Construction.



	Sep-16	Oct-16	Nov-16	Dec-16	Jan-17	Feb-17	Mar-17	Apr-17	May-17	Jun-17	Jul-17	Aug-17	Sep-17
◆ Homes Sold	261	259	273	277	187	221	355	302	360	314	298	308	247
■ Total Listings	1469	1477	1421	1268	1363	1475	1507	1404	1371	1344	1231	1298	1305

## Washington County Single Family Residential Home Sales by Year

According to the Washington Board of Realtors & does not include Outside Area Numbers.  
Also does not include Condo, Townhouse, Modular, Manufactured, Mobile or New Construction.

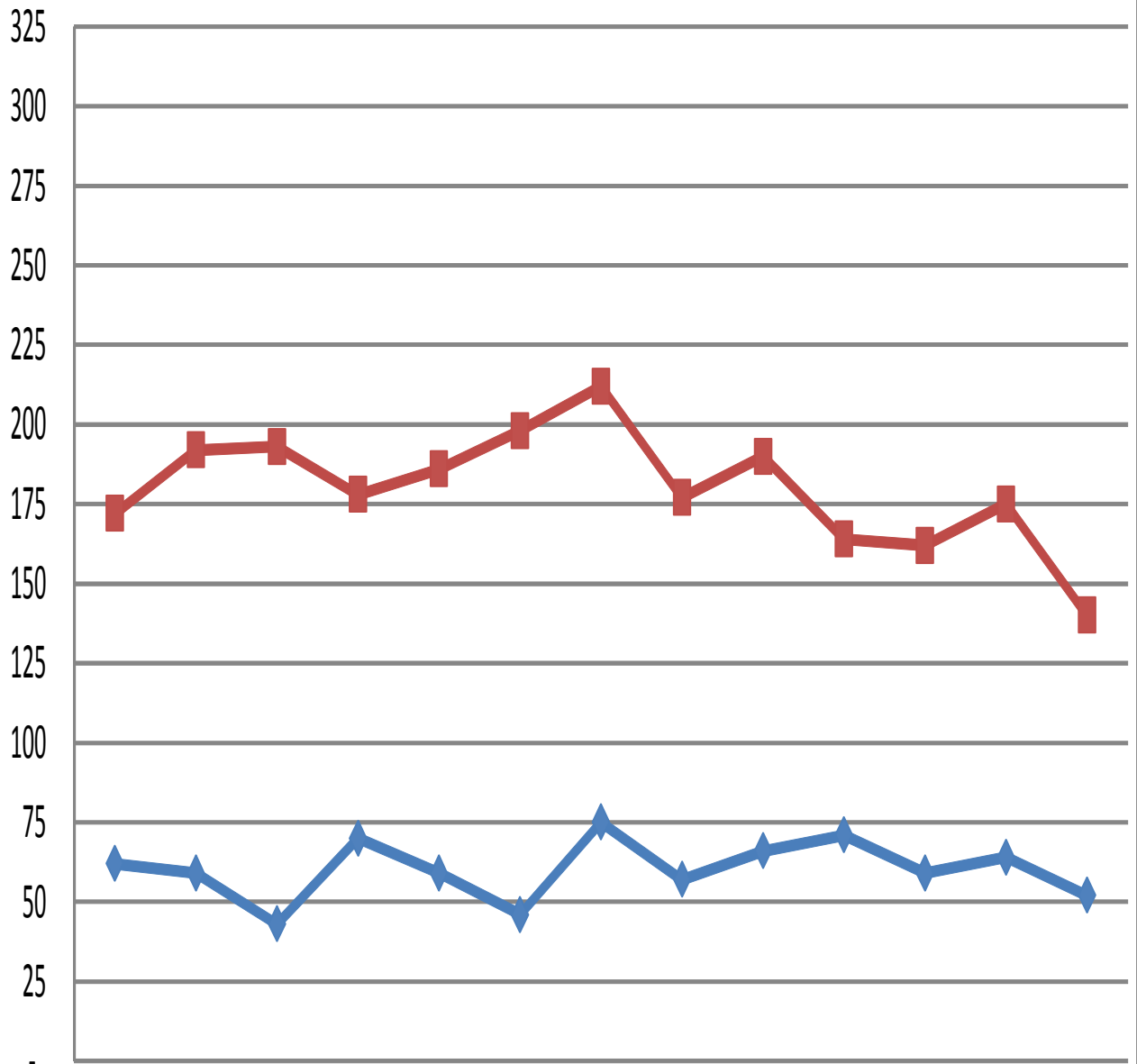


**Home sales by year**

	Jan	Feb	Mar	Apr	May	Jun	Jul	Aug	Sep	Oct	Nov	Dec
2017	187	221	355	302	360	314	298	308	247			
2016	165	190	305	278	322	347	290	312	261	259	273	277
2015	173	190	255	262	291	302	279	238	239	222	192	223
2014	148	184	222	214	264	235	209	201	220	256	198	227
2013	159	173	249	224	297	257	235	265	232	195	192	190
2012	129	181	206	191	233	209	190	197	169	184	185	181
2011	157	161	218	228	213	265	190	201	218	204	190	186
2010	101	176	223	221	209	224	167	194	157	141	178	182
2009	84	115	144	184	182	197	215	155	170	190	168	179
2008	78	97	131	136	153	155	122	143	129	126	105	109
2007	150	121	201	171	195	188	145	158	100	104	129	106
2006	159	166	185	178	194	199	192	187	168	172	152	164
2005	174	159	202	263	270	239	220	298	257	209	213	167
2004	118	133	202	201	240	251	238	237	218	211	219	218

# Washington County Condo/Townhouse Sales & Listings

According to the Washington Board of Realtors & does not include Outside Area Numbers.



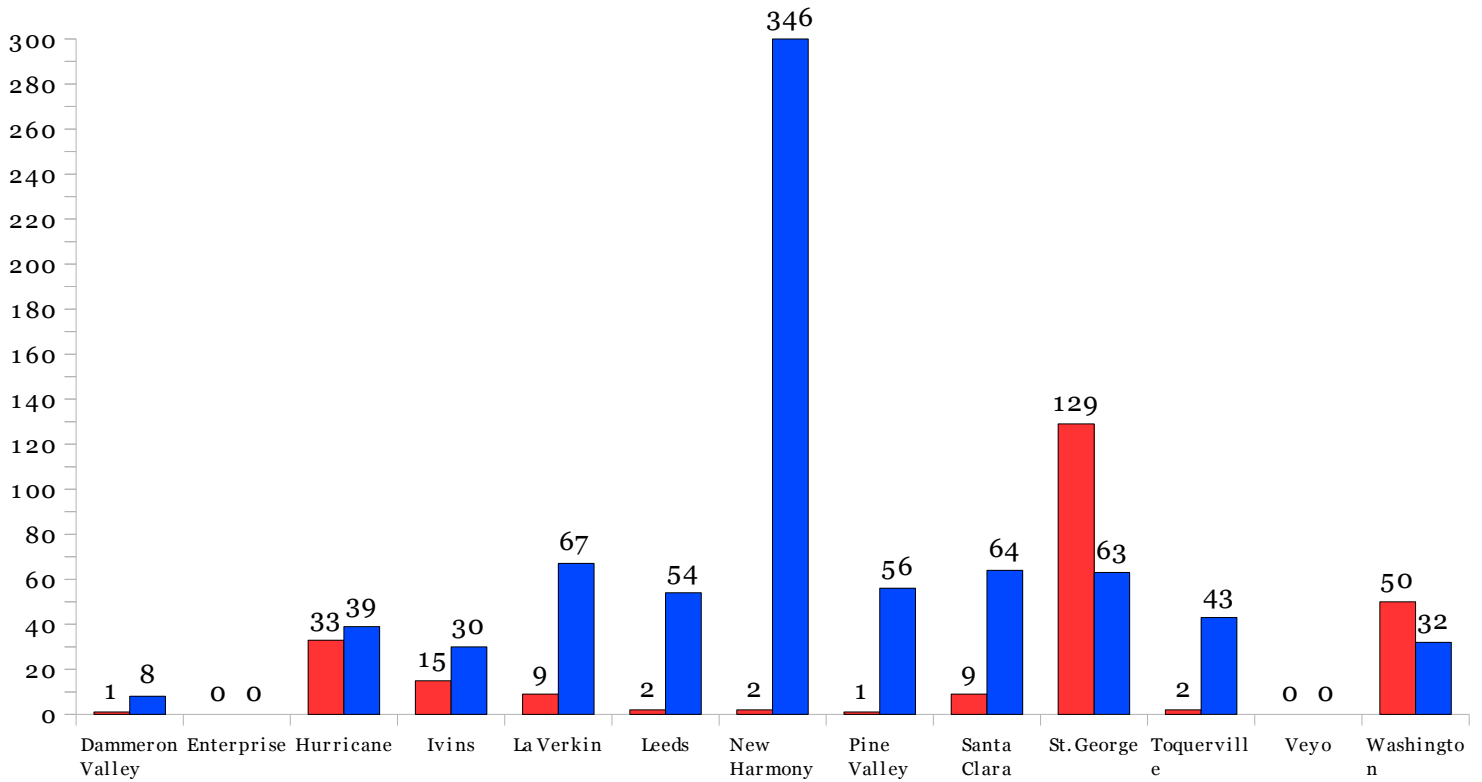
	Sep-16	Oct-16	Nov-16	Dec-16	Jan-17	Feb-17	Mar-17	Apr-17	May-17	Jun-17	Jul-17	Aug-17	Sep-17
◆ Condo/Townhome Sold	62	59	43	70	59	46	75	57	66	71	59	64	52
■ Condo/Townhome Listings	172	192	193	178	186	198	212	177	190	164	162	175	140



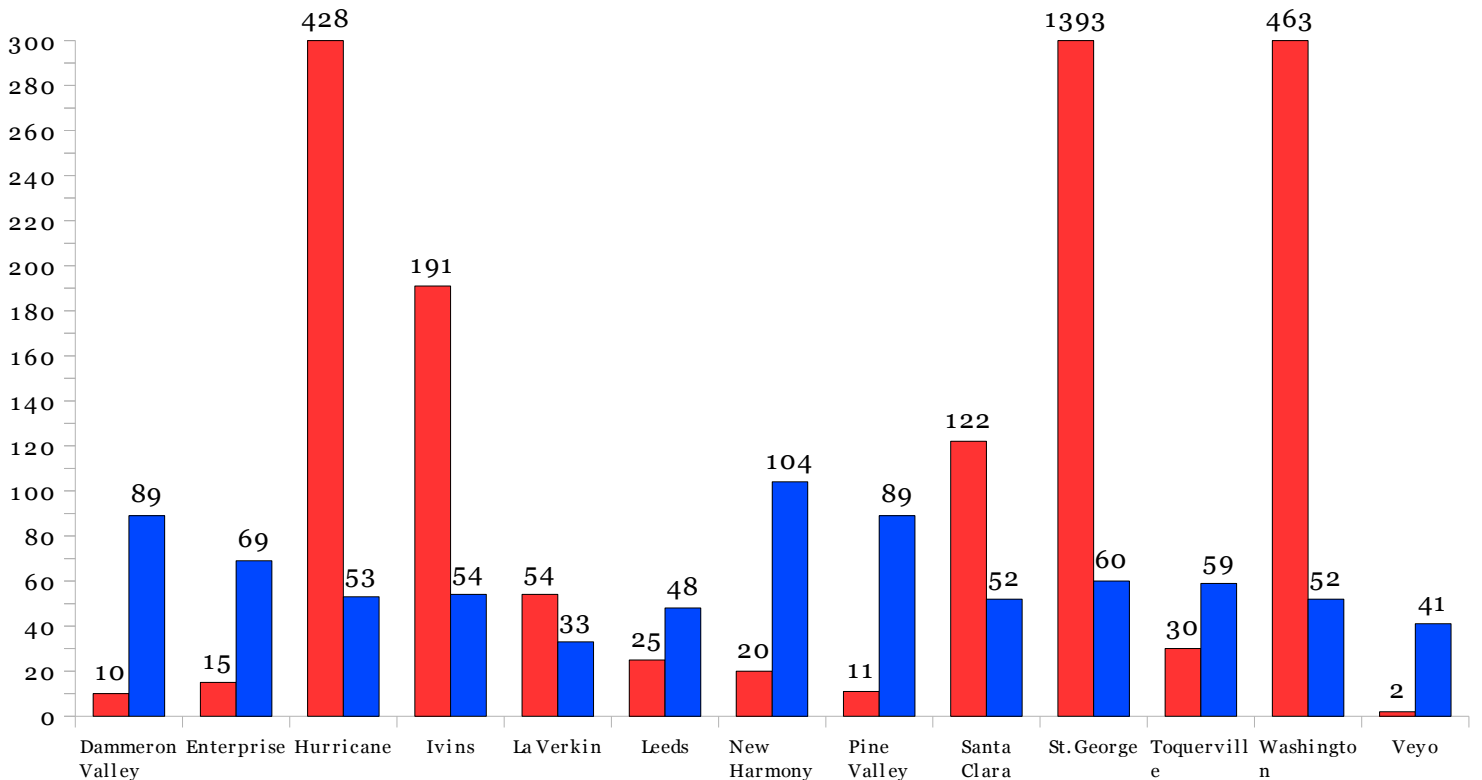
# Statistical Market Analysis of Homes Sold

■ # of Homes Sold      ■ Average Days on the Market

From Sept 1, 2017 to Sept 30, 2017 according to Washington County Realtors Assoc.

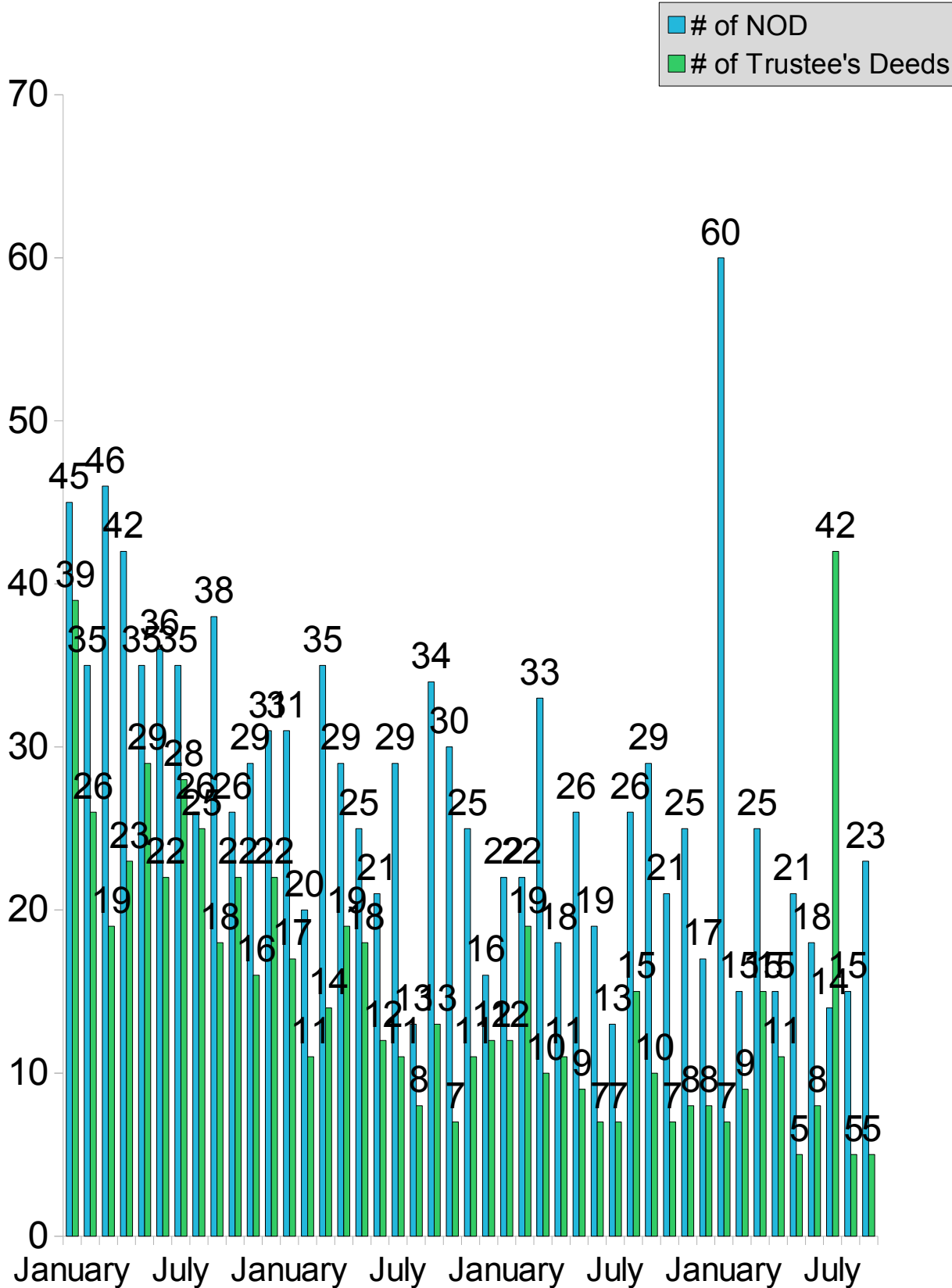


From Jan. 1, 2017 to Sept 30, 2017 according to Washington County Realtors Assoc.



# Washington County Notice of Defaults & Trustee's Deeds Per Month

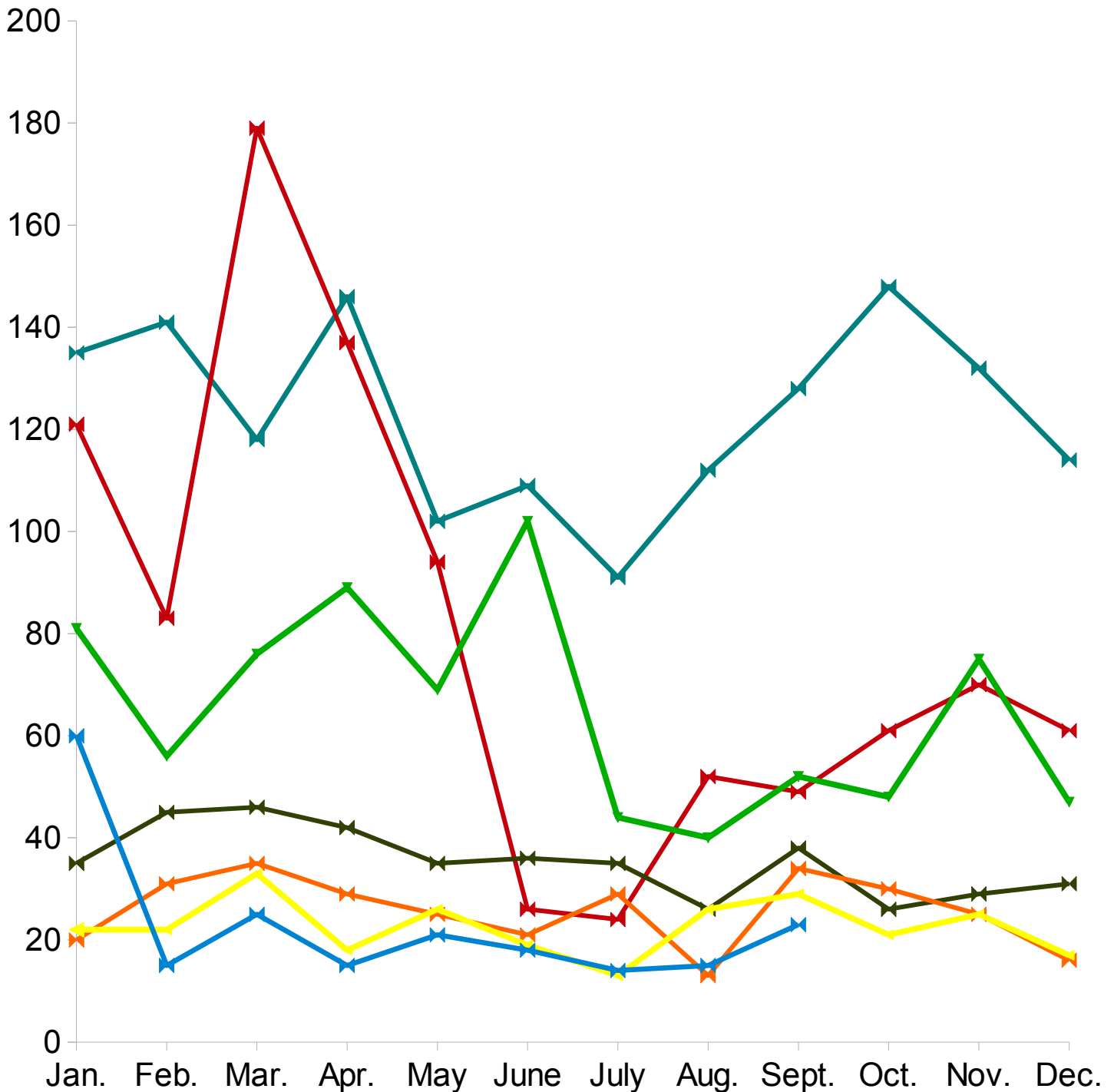
From Jan. 1, 2014 to Sept 30, 2017 according to Washington County Records as researched by Inwest Title Services, Inc.



# Washington County Notice of Defaults by Year

From Jan. 1, 2011 to Sept 30, 2017 according to Washington County Records as researched by Invest Title Services, Inc.

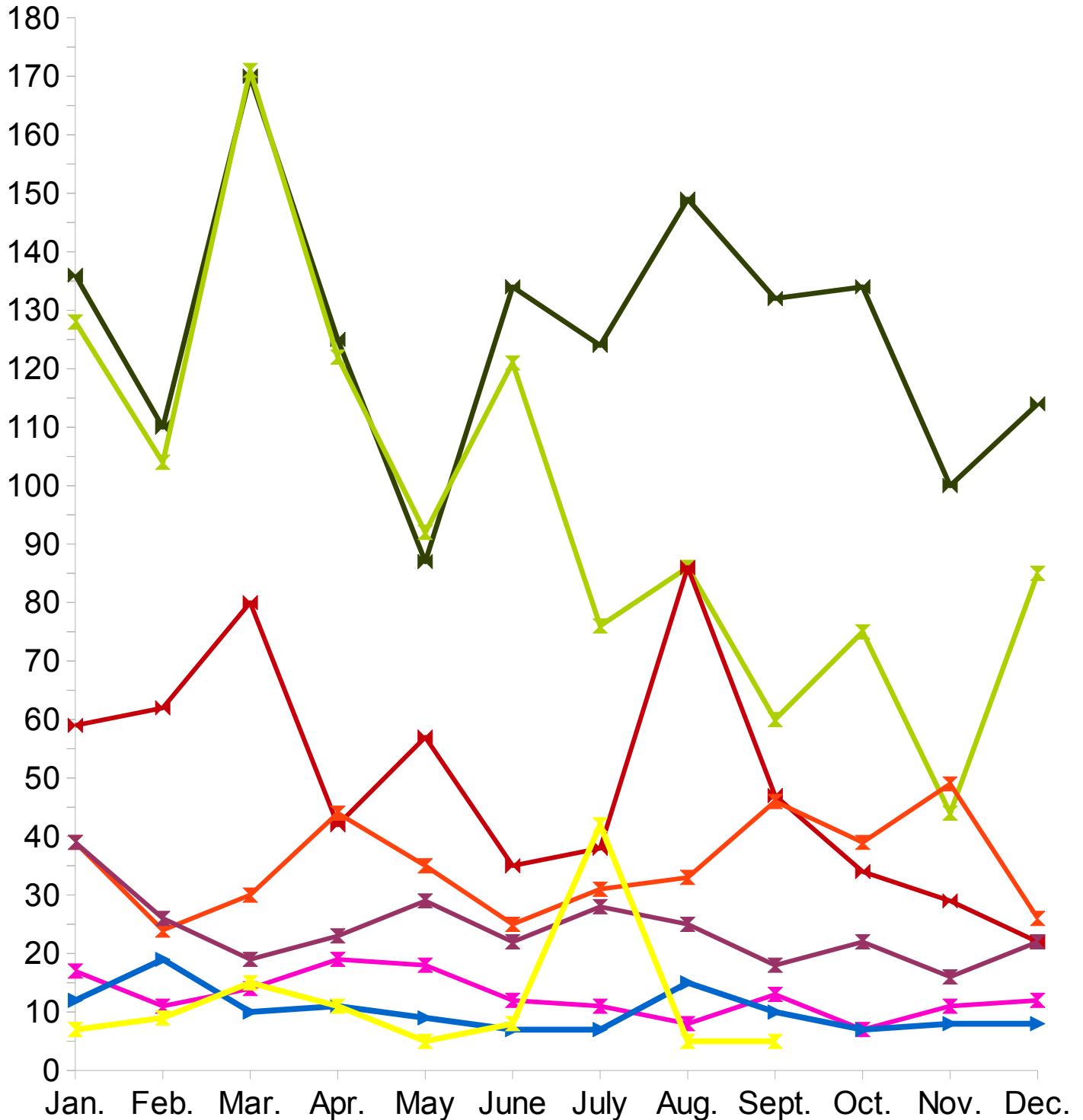
◆ 2011 NOD's
◆ 2012 NOD's
◆ 2013 NOD's
◆ 2014 NOD's
◆ 2015 NOD's
Linear (2015 NOD's)
◆ 2016 NOD's



# Washington County Trustee's Deeds by Year

From Jan. 1, 2010 to Sept 30, 2017 according to Washington County Records as researched by Invest Title Services, Inc.

- ◆— 2010 Trustees
- ◆— 2011 Trustees
- ◆— 2012 Trustees
- ◆— 2013 Trustees
- ◆— 2014 Trustees
- ◆— 2015 Trustees
- ◆— Linear (2015 Trustees)
- ◆— 2016 Trustees Deeds
- ◆— 2017 Trustee's Deeds





# Southwestern Utah Building Permit Summary

From Jan. 1, 2017 to Oct 18, 2017 (permits over \$10,000) according to  
The Southwestern Utah Construction Monitor

<i>Residential</i>	<i>Permits</i>	<i>Value</i>	<i>Units</i>
Single Family Homes	2083	\$410,377,419	2112
Other	1339	\$81,017,781	559
<b>Total</b>	<b>3422</b>	<b>\$491,395,200</b>	<b>2671</b>

<i>Commercial</i>	<i>Permits</i>	<i>Value</i>	<i>Units</i>
Offices/Banks/R&D Professional	2	\$1,695,600	0
Retail/Dining/Personal Care	5	\$7,258,680	0
Public Buildings & Projects	1	\$1,900,000	0
Other	255	\$114,348,168	0
<b>Total</b>	<b>263</b>	<b>\$125,202,448</b>	<b>0</b>

# Top 25 Southwestern Utah Home Builders

From Jan. 1, 2017 to Sept 30, 2017 according to The  
Southwestern Utah Construction Monitor

<i>Builder</i>	<i>Homes</i>	<i>Total Value of Construction Permits</i>
1-Salisbury Homes	165	\$25,397,407.00
2- Ence Homes	125	\$21,667,798.00
3-Jack Fisher Const of Southern Utah	96	\$15,008,212.00
4-New Trend Construction	49	\$12,124,627.00
5-Ivory Homes	55	\$10,259,696.00
6- Rock Tite Construction	42	\$8,502,155.00
7-S&S Construction	49	\$8,460,786.00
8-Sun River Construction	63	\$8,036,000.00
9-Perry Homes	47	\$7,670,363.00
10-Sullivan Homes	38	\$6,075,337.00
11-Van Gulder Homes	21	\$4,963,483.00
12-MLF Construction	20	\$4,689,406.00
13-Rock Solid Builders	24	\$4,121,533.00
14-Gemstone Homes	30	\$3,610,533.00
15-Split Rock Custom Homes	11	\$3,439,500.00
16-DVB Construction	16	\$3,043,244.00
17- Desert Sky Homes	8	\$2,973,107.00
18-JT Custom Homes	8	\$2,935,096.00
19-Interstate Homes	16	\$2,707,951.00
20-Custom Contracting Corp	14	\$2,694,030.00
21 - Premier Dev	13	\$2,637,056.00
22-Brian Greer Dev	6	\$2,511,290.00
23-Rice Asset Management	11	\$2,342,612.00
24-Lindsay Douglas Construction	19	\$2,262,434.00
25-Dennis Garr Construction	16	\$2,160,000.00

## Subdivided Lots

From Sept 1, 2017 to Sept 30, 2017 according to Washington  
County Realtors Assoc.

<i>Area</i>	<i># Sold</i>	<i>Avg. Sale Price</i>	<i>Total Active</i>	<i>Days On Market</i>
Greater St. George	14	\$118,148.00	459	285
Hurricane Valley	11	\$59,595.00	136	178
Zion Park	3	\$21,556.00	59	271
Northwest County	3	\$151,000.00	69	258
Northeast County	1	\$39,900.00	22	220
Outside County	14	\$41,750.00	262	232

From Jan. 1, 2017 to Sept 30, 2017 according to Washington  
County Realtors Assoc.

<i>Area</i>	<i># Sold</i>	<i>Avg. Sale Price</i>	<i>Total Active</i>	<i>Days On Market</i>
Greater St. George	253	\$142,252.00	1081	248
Hurricane Valley	104	\$69,402.00	343	168
Zion Park	20	\$76,310.00	144	189
Northwest County	25	\$76,328.00	106	241
Northeast County	22	\$71,664.00	69	249
Outside County	106	\$34,366.00	490	241

## Land/Acreage Sold

From Sept 1, 2017 to Sept 30, 2017 according to Washington  
County Realtors Assoc.

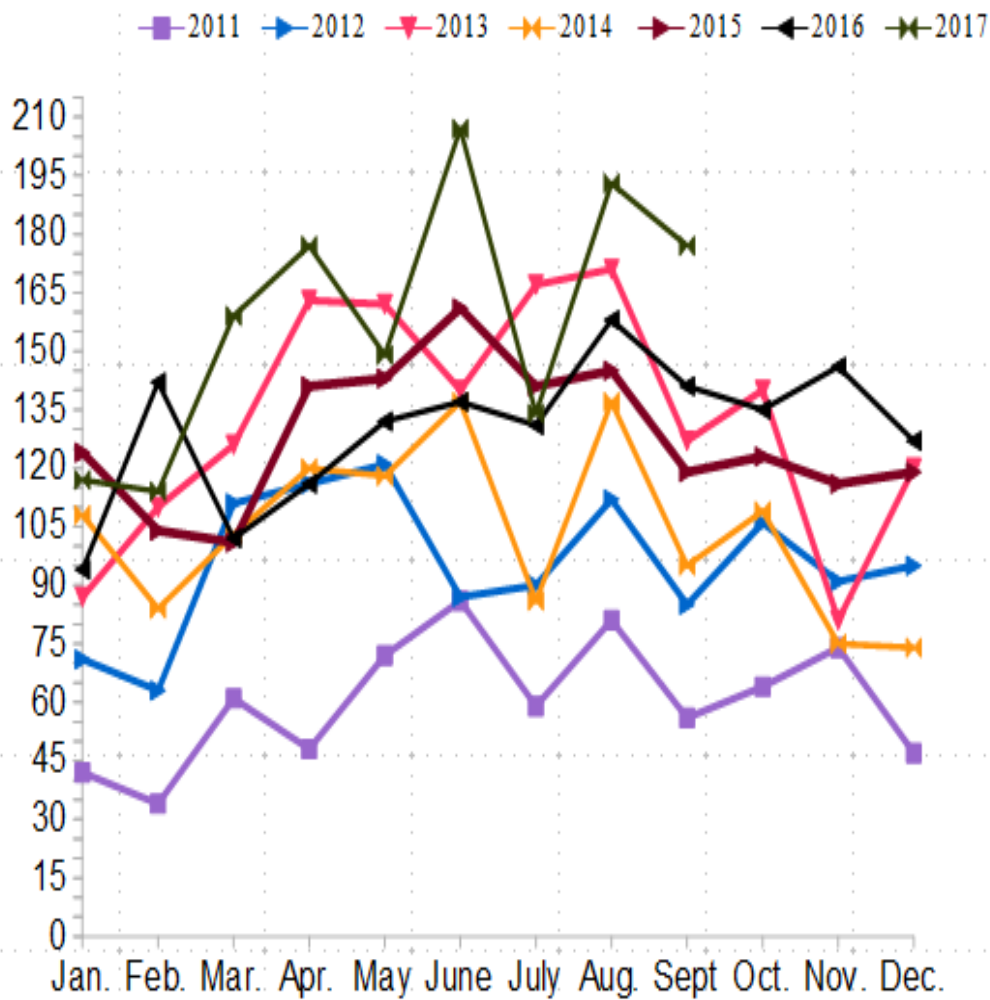
<i>Area</i>	<i># Sold</i>	<i>Avg. Sale Price</i>	<i>Total Active</i>	<i>Days On Market</i>
Greater St. George	6	\$212,500.00	90	310
Hurricane Valley	2	\$48,965.00	70	274
Zion Park	1	\$249,000.00	30	349
Northwest County	1	\$24,000.00	57	235
Northeast County	0	\$0.00	26	176
Outside County	10	\$101,515.00	371	308

From Jan. 1, 2017 to Sept 30, 2017 according to Washington  
County Realtors Assoc.

<i>Area</i>	<i># Sold</i>	<i>Avg. Sale Price</i>	<i>Total Active</i>	<i>Days On Market</i>
Greater St. George	53	\$181,646.00	215	250
Hurricane Valley	46	\$145,925.00	153	230
Zion Park	6	\$235,150.00	47	320
Northwest County	11	\$33,464.00	91	243
Northeast County	15	\$159,707.00	55	219
Outside County	81	\$78,726.00	628	315

The data, charts, and graphs are for informational purposes only. Inwest Title Services, Inc. makes no representations that the information contained herein is complete, accurate or applicable to your individual circumstances.

# Single Family Home Permits for Washington County per the Southwest Utah Construction Monitor



	2011	2012	2013	2014	2015	2016	2017
Categories	Y-Values	Y-Values	Y-Values	Y-Values	Y-Values	Y-Values	Y-Values
Jan.	42	71	87	108	124	94	117
Feb.	34	63	110	84	104	142	114
Mar.	61	111	126	103	101	102	159
Apr.	48	116	163	120	141	116	177
May	72	121	162	118	143	132	149
June	86	87	140	137	161	137	207
July	59	90	167	86	141	131	134
Aug.	81	112	171	137	145	158	193
Sept.	56	85	127	95	119	141	177
Oct.	64	106	140	109	123	135	
Nov.	74	91	81	75	116	146	
Dec.	47	95	120	74	119	127	