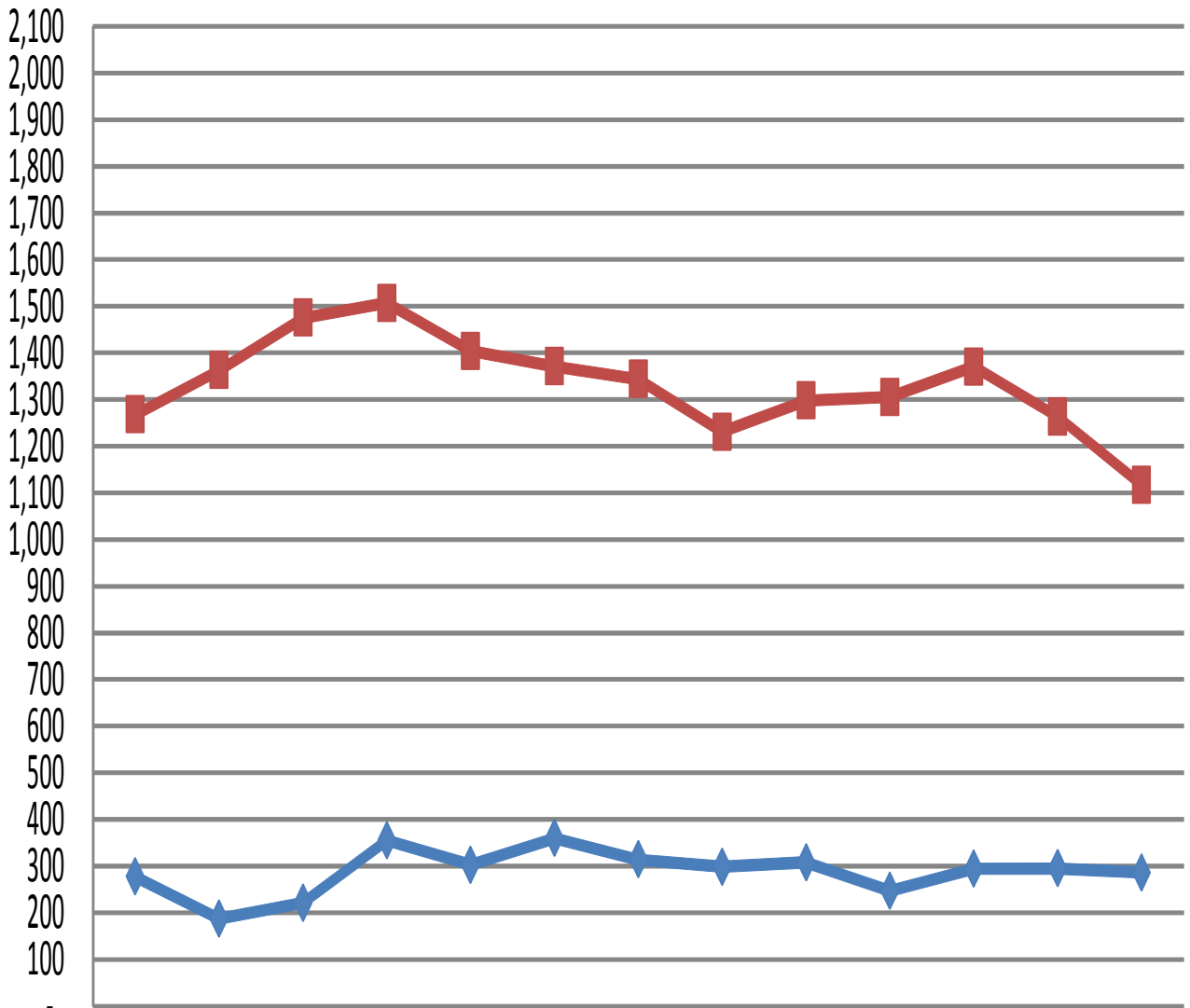


Washington County Single Family Residential Homes Sold & Total Listings

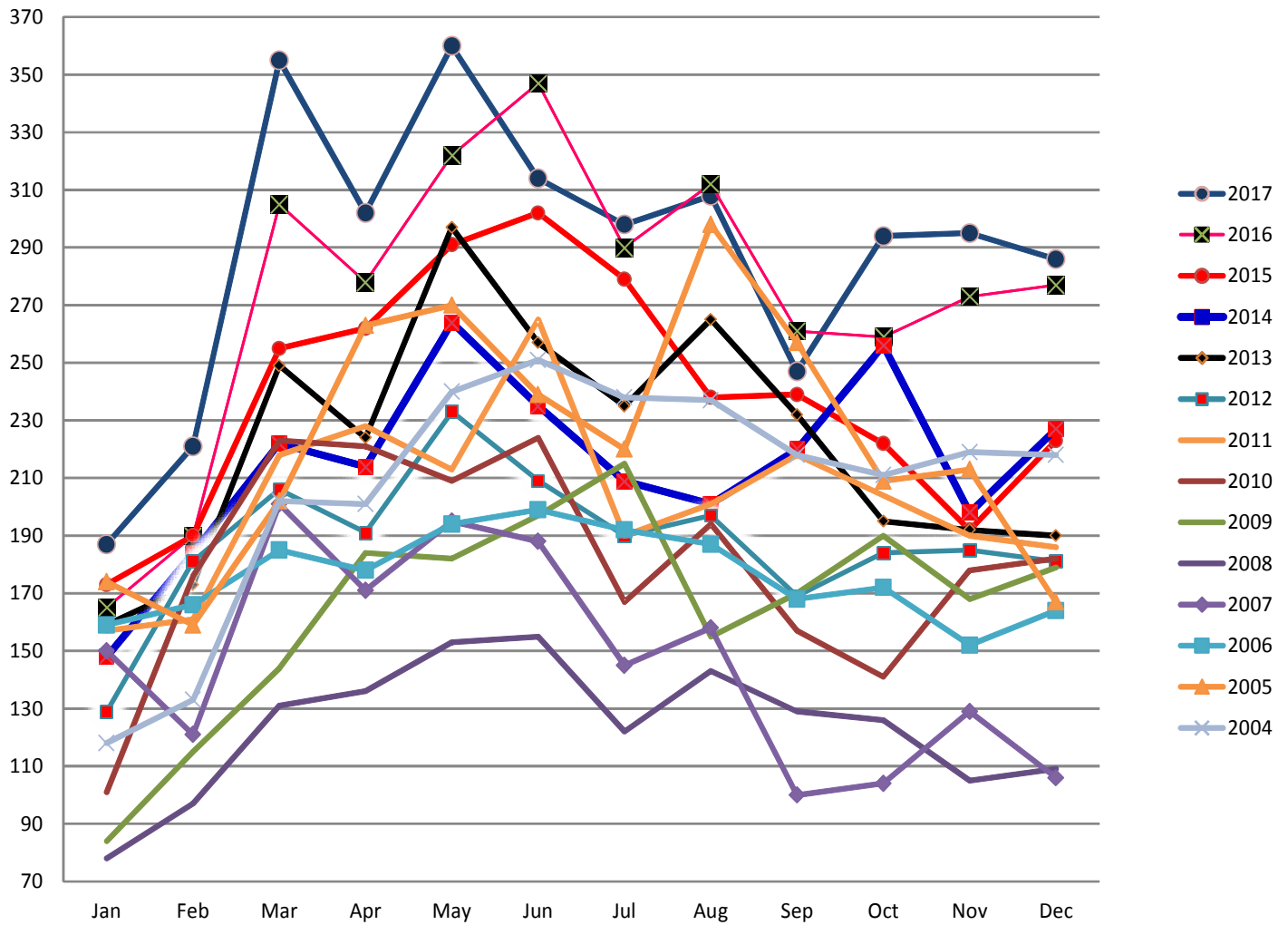
According to the Washington Board of Realtors & does not include Outside Area Numbers.
Also does not include Condo, Townhouse, Modular, Manufactured, Mobile, or New Construction.



	Dec-16	Jan-17	Feb-17	Mar-17	Apr-17	May-17	Jun-17	Jul-17	Aug-17	Sep-17	Oct-17	Nov-17	Dec-17
◆ Homes Sold	277	187	221	355	302	360	314	298	308	247	294	295	286
■ Total Listings	1268	1363	1475	1507	1404	1371	1344	1231	1298	1305	1370	1263	1117

Washington County Single Family Residential Home Sales by Year

According to the Washington Board of Realtors & does not include Outside Area Numbers.
Also does not include Condo, Townhouse, Modular, Manufactured, Mobile or New Construction.

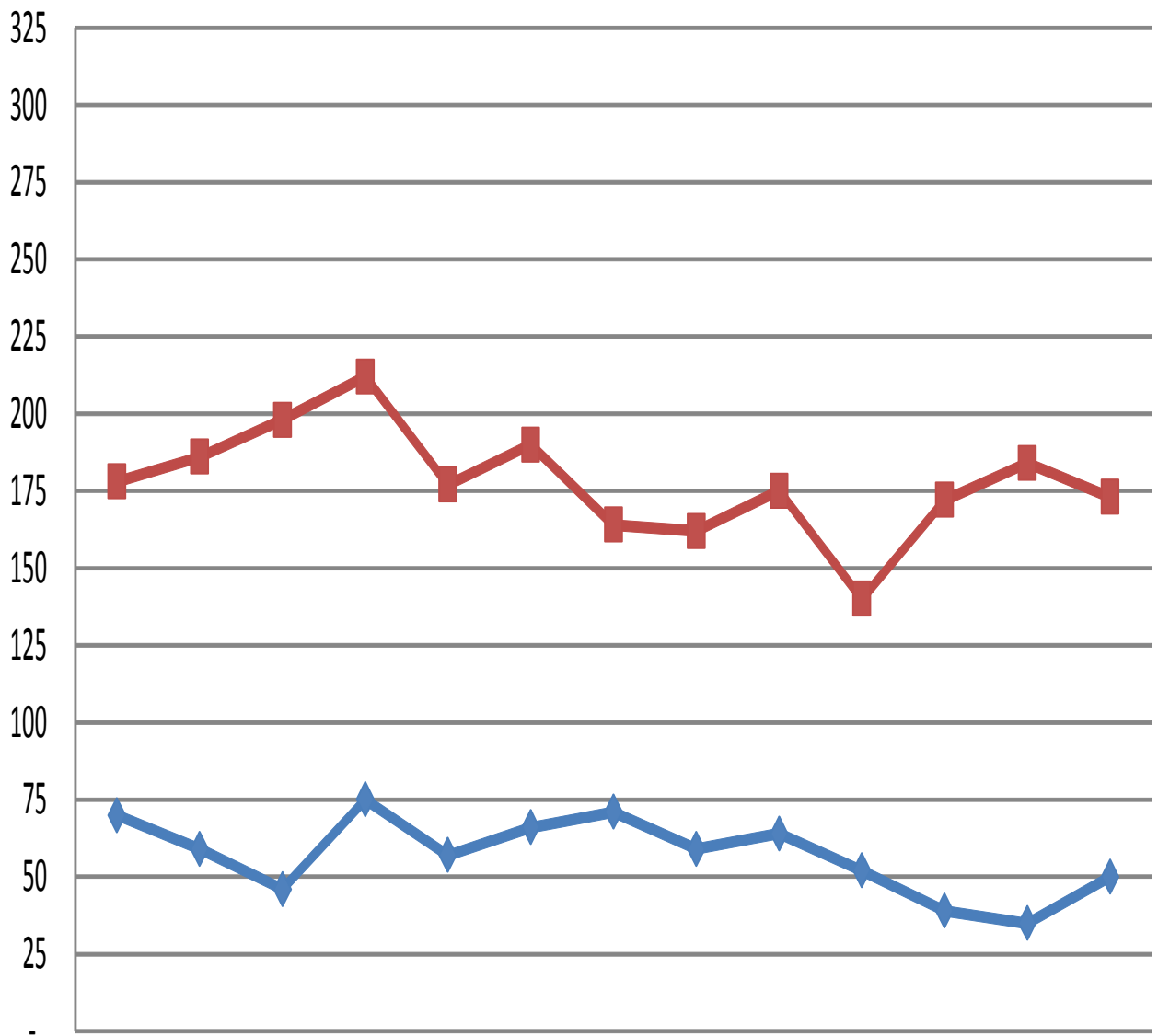


Home sales by year

	Jan	Feb	Mar	Apr	May	Jun	Jul	Aug	Sep	Oct	Nov	Dec
2017	187	221	355	302	360	314	298	308	247	294	295	286
2016	165	190	305	278	322	347	290	312	261	259	273	277
2015	173	190	255	262	291	302	279	238	239	222	192	223
2014	148	184	222	214	264	235	209	201	220	256	198	227
2013	159	173	249	224	297	257	235	265	232	195	192	190
2012	129	181	206	191	233	209	190	197	169	184	185	181
2011	157	161	218	228	213	265	190	201	218	204	190	186
2010	101	176	223	221	209	224	167	194	157	141	178	182
2009	84	115	144	184	182	197	215	155	170	190	168	179
2008	78	97	131	136	153	155	122	143	129	126	105	109
2007	150	121	201	171	195	188	145	158	100	104	129	106
2006	159	166	185	178	194	199	192	187	168	172	152	164
2005	174	159	202	263	270	239	220	298	257	209	213	167
2004	118	133	202	201	240	251	238	237	218	211	219	218

Washington County Condo/Townhouse Sales & Listings

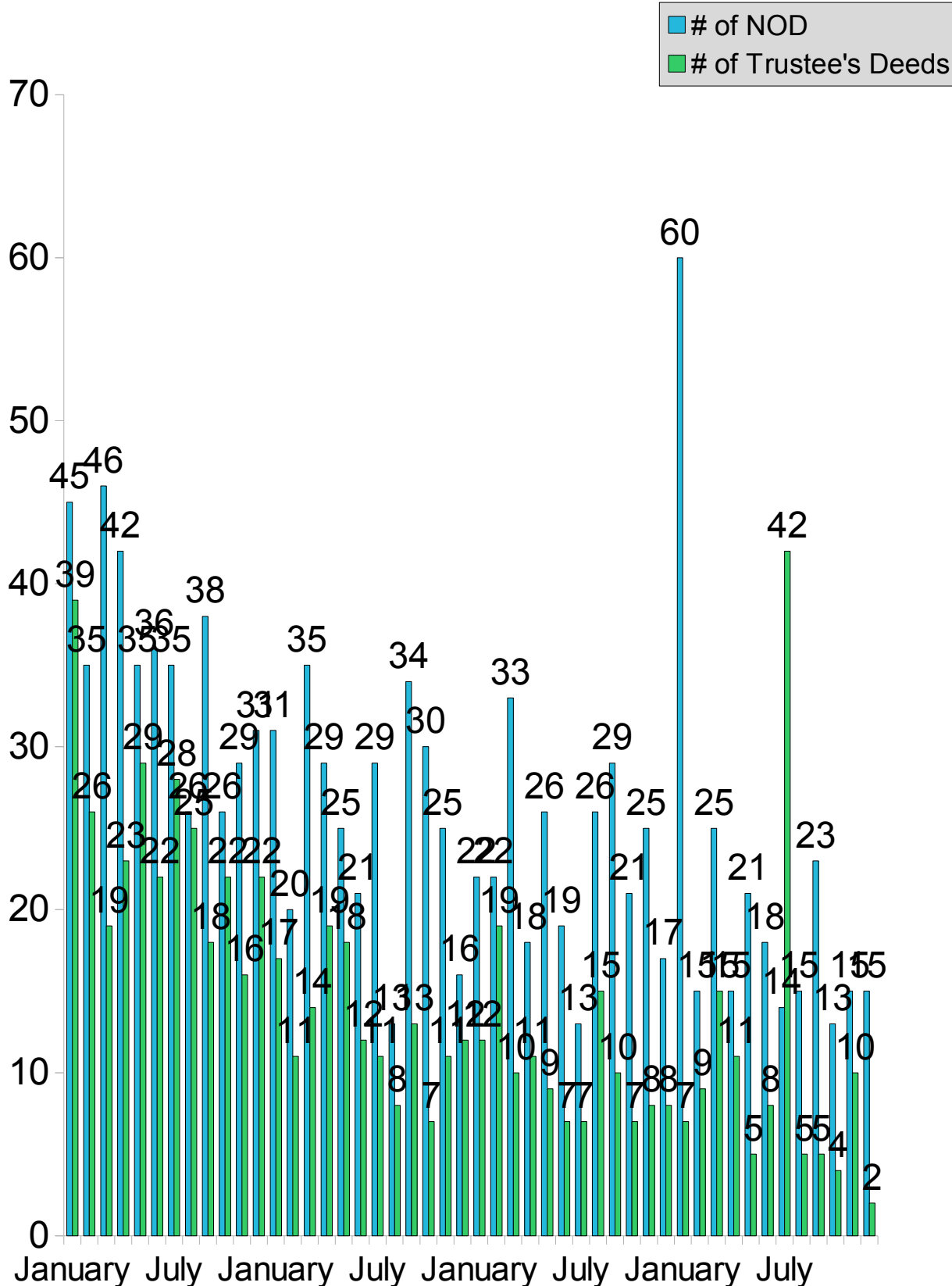
According to the Washington Board of Realtors & does not include Outside Area Numbers.



	Dec-16	Jan-17	Feb-17	Mar-17	Apr-17	May-17	Jun-17	Jul-17	Aug-17	Sep-17	Oct-17	Nov-17	Dec-17
◆ Condo/Townhome Sold	70	59	46	75	57	66	71	59	64	52	39	35	50
■ Condo/Townhome Listings	178	186	198	212	177	190	164	162	175	140	172	184	173

Washington County Notice of Defaults & Trustee's Deeds Per Month

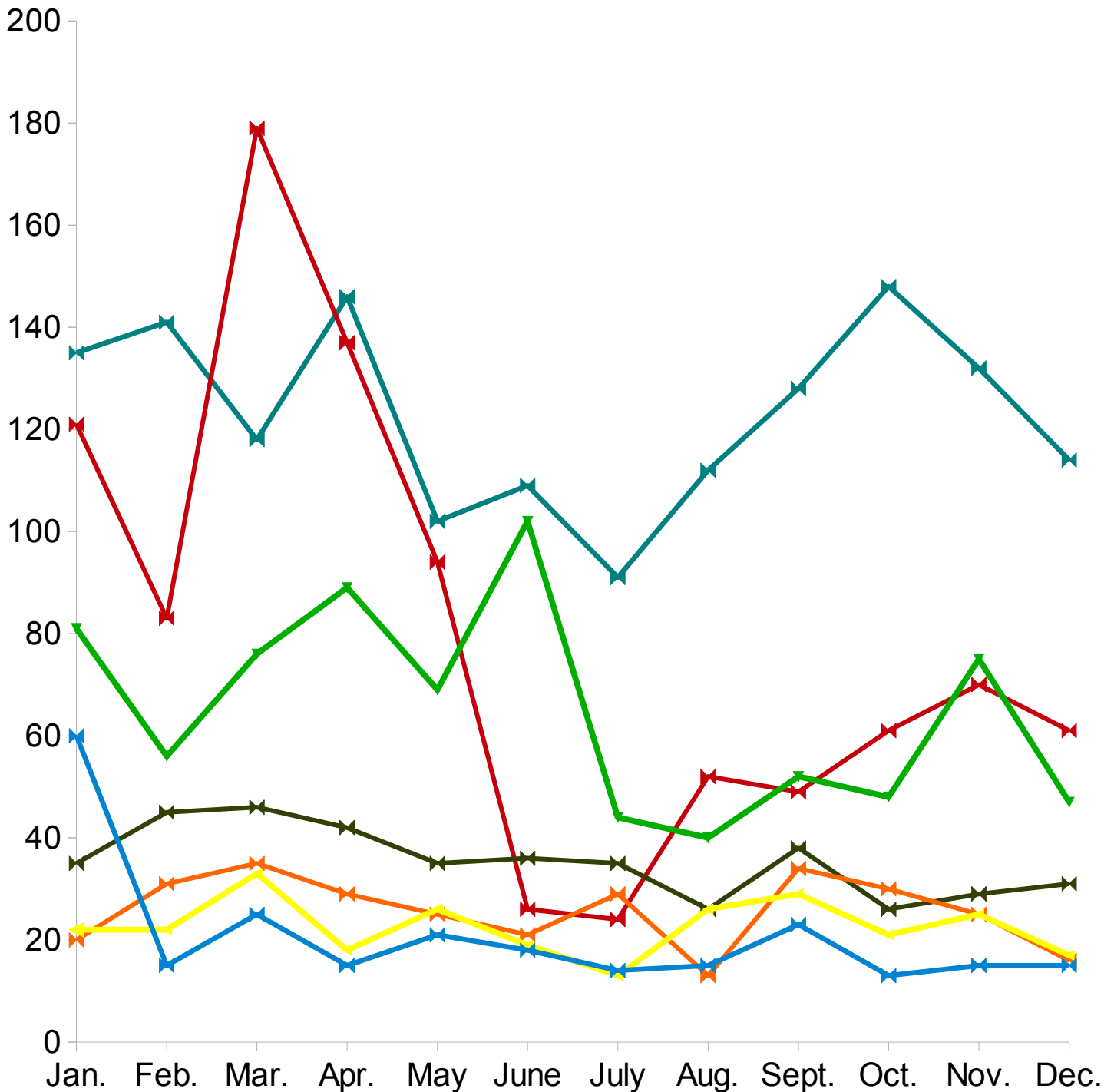
From Jan. 1, 2014 to Dec 31, 2017 according to Washington County Records as researched by Invest Title Services, Inc.



Washington County Notice of Defaults by Year

From Jan. 1, 2011 to Dec 31, 2017 according to Washington County Records as researched by Invest Title Services, Inc.

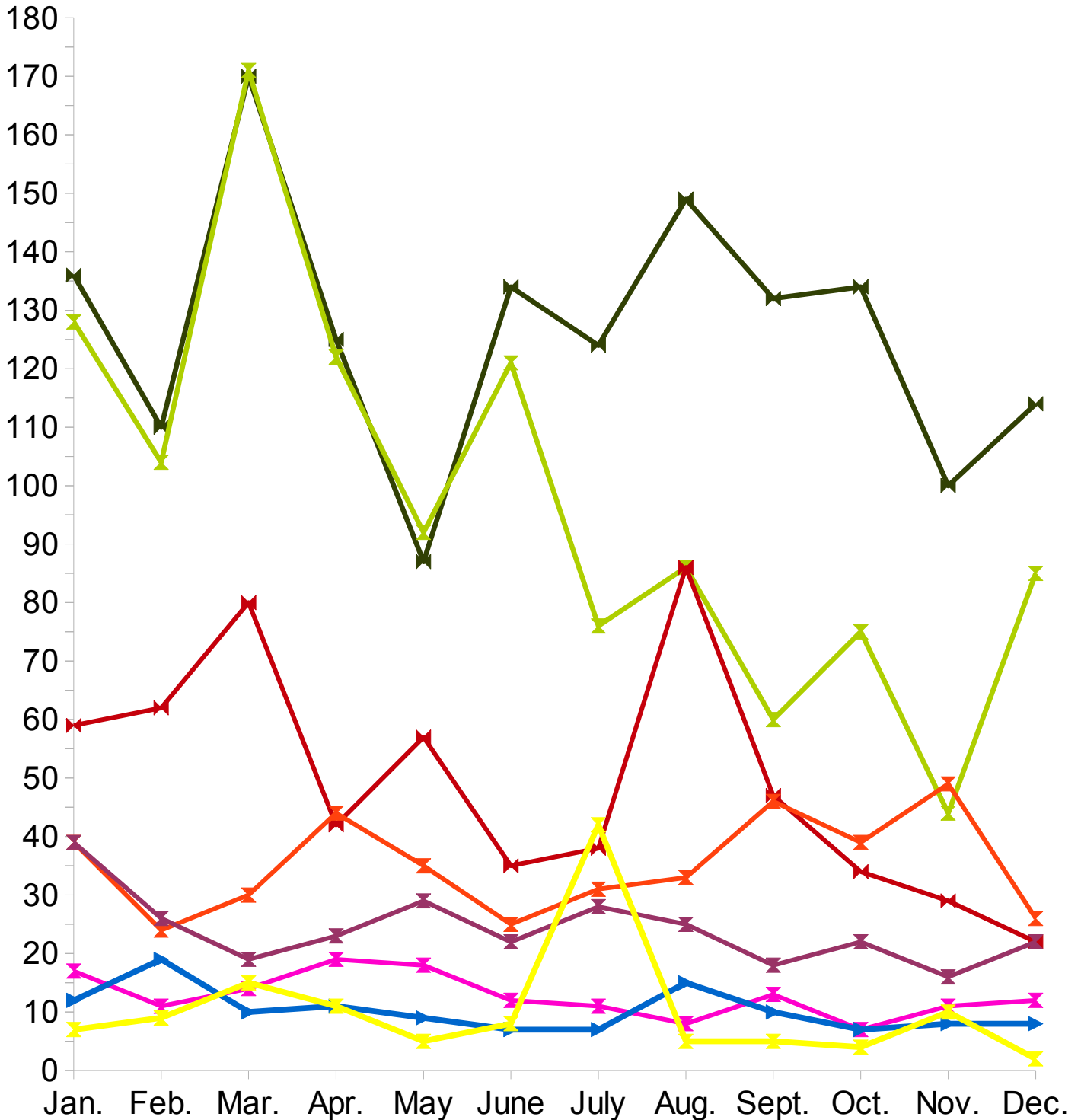
◆ 2011 NOD's
 ◆ 2012 NOD's
 ◆ 2013 NOD's
 ◆ 2014 NOD's
 ◆ 2015 NOD's
 Linear (2015 NOD's)
 ◆ 2016 NOD's



Washington County Trustee's Deeds by Year

From Jan. 1, 2010 to Dec 31, 2017 according to Washington County Records as researched by Invest Title Services, Inc.

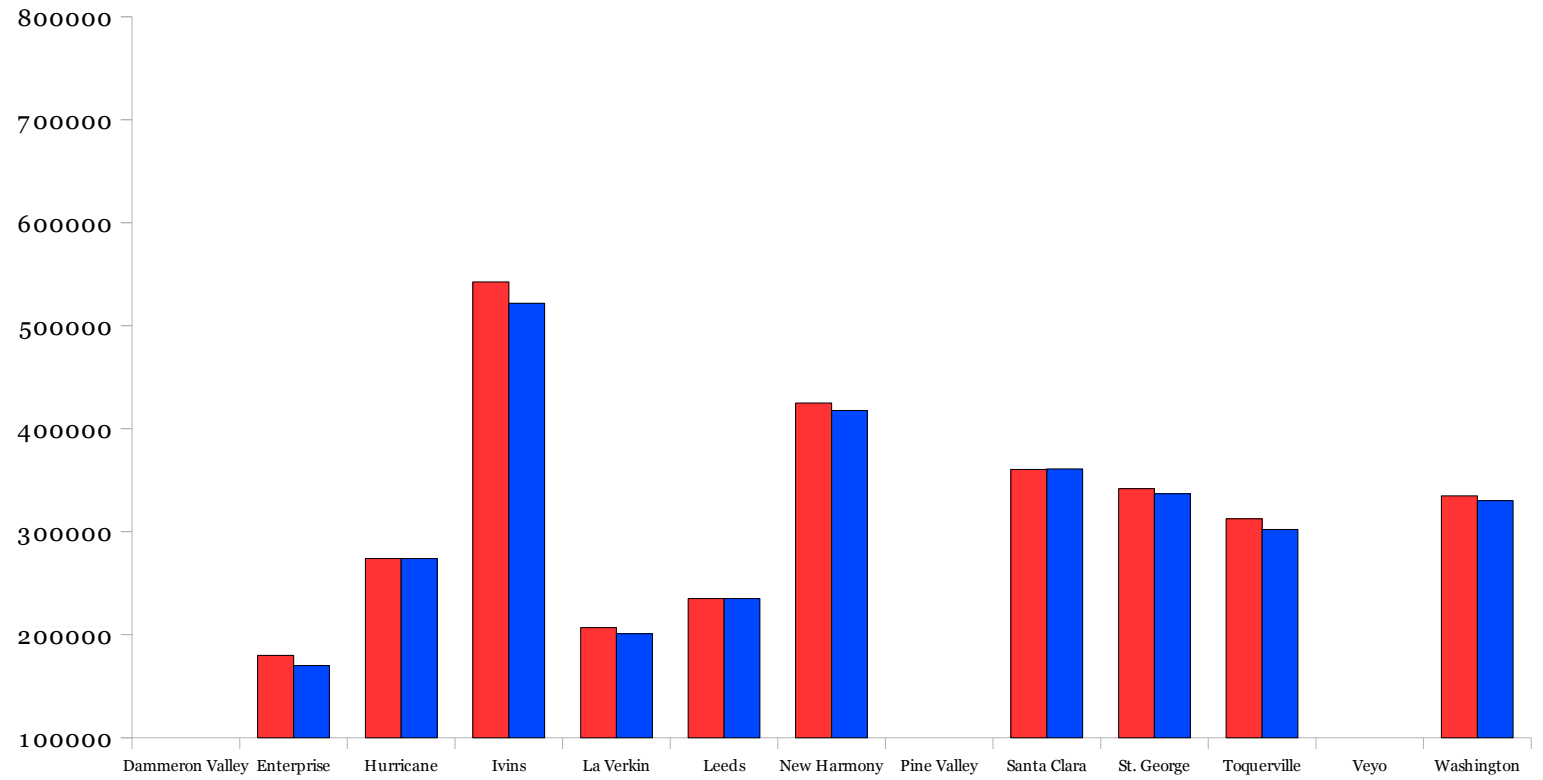
- 2010 Trustees
- 2011 Trustees
- 2012 Trustees
- 2013 Trustees
- 2014 Trustees
- 2015 Trustees
- Linear (2015 Trustees)
- 2016 Trustees Deeds
- 2017 Trustee's Deeds



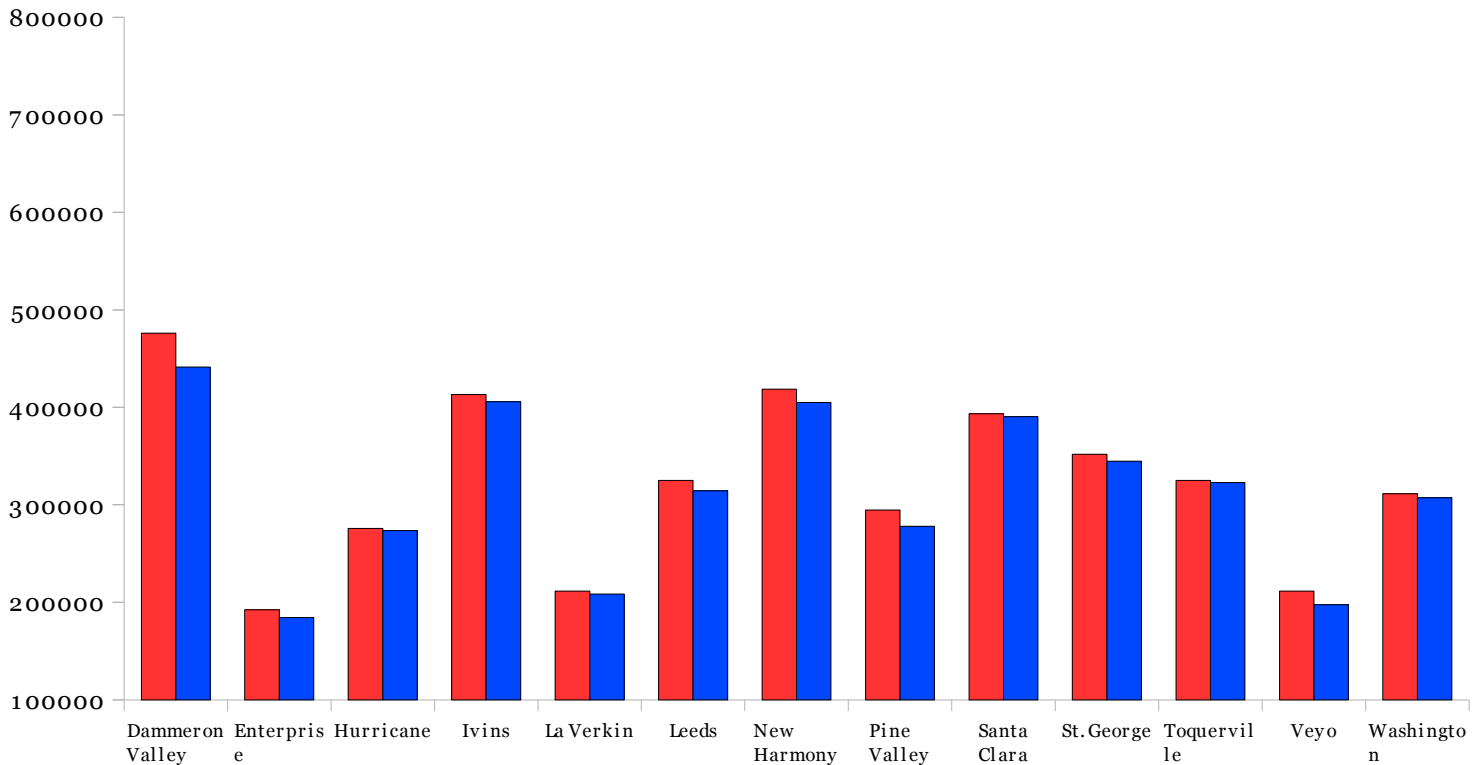
Statistical Market Analysis of Homes Sold

■ Average List Price ■ Average Sold Price

From Dec 1, 2017 to Dec 31, 2017 according to Washington County Realtors Assoc.



From Jan 1, 2017 to Dec 31, 2017 according to Washington County Realtors Assoc.



Southwestern Utah Building Permit Summary

From Jan. 1, 2017 to Dec 31, 2017 (permits over \$10,000) according to
The Southwestern Utah Construction Monitor

<i>Residential</i>	<i>Permits</i>	<i>Value</i>	<i>Units</i>
Single Family Homes	2712	\$540,455,352	2744
Other	1807	\$129,567,816	871
Total	4519	\$670,023,168	3615

<i>Commercial</i>	<i>Permits</i>	<i>Value</i>	<i>Units</i>
Offices/Banks/R&D Professional	4	\$4,845,456	0
Retail/Dining/Personal Care	10	\$13,496,532	0
Public Buildings & Projects	1	\$1,900,000	0
Other	352	\$209,897,084	0
Total	367	\$230,139,072	0

Top 25 Southwestern Utah Home Builders

From Jan. 1, 2017 to Dec 31, 2017 according to The
 Southwestern Utah Construction Monitor

<i>Builder</i>	<i>Homes</i>	<i>Total Value of Construction Permits</i>
1-Salisbury Homes	226	\$38,517,666.00
2- Ence Homes	155	\$26,984,070.00
3-Jack Fisher Const of Southern Utah	132	\$21,243,905.00
4-S&S Homes	88	\$15,464,363.00
5-New Trend Construction	63	\$15,275,923.00
6- Sun River Construction	105	\$13,114,000.00
7-Ivory Homes	71	\$13,095,227.00
8-Rock Tite Construction	49	\$9,948,294.00
9-Perry Homes Utah Inc	61	\$9,717,028.00
10-Sullivan Homes	47	\$7,499,337.00
11-MLF Construction	24	\$5,873,089.00
12-Van Guilder Homes	25	\$5,659,862.00
13-Rock Solid Builders	31	\$5,485,536.00
14-Split Rock Custom Homes	15	\$5,190,557.00
15-Gemstone Homes	35	\$4,269,395.00
16-Desert Sky Homes	12	\$4,263,957.00
17- Brian Geer Dev	11	\$3,839,606.00
18-JT Custom Homes	11	\$3,818,096.00
19-Anderson Custom Homes	9	\$3,719,977.00
20-DVB Construction	19	\$3,638,898.00
21 – Premier Dev	17	\$3,626,305.00
22-Rice Asset Management	17	\$3,595,762.00
23-Interstate Homes	21	\$3,577,829.00
24-High Desert Homes	19	\$3,517,089.00
25-AJ Construction	12	\$3,395,571.00

Subdivided Lots

From Dec 1, 2017 to Dec 31, 2017 according to Washington
County Realtors Assoc.

<i>Area</i>	<i># Sold</i>	<i>Avg. Sale Price</i>	<i>Total Active</i>	<i>Days On Market</i>
Greater St. George	37	\$130,035.00	443	272
Hurricane Valley	9	\$76,744.00	123	166
Zion Park	0	\$0.00	54	341
Northwest County	4	\$44,375.00	55	311
Northeast County	1	\$31,800.00	18	223
Outside County	1	\$9,500.00	247	237

From Jan. 1, 2017 to Dec 31, 2017 according to Washington
County Realtors Assoc.

<i>Area</i>	<i># Sold</i>	<i>Avg. Sale Price</i>	<i>Total Active</i>	<i>Days On Market</i>
Greater St. George	336	\$140,170.00	1242	243
Hurricane Valley	125	\$68,735.00	405	164
Zion Park	23	\$69,508.00	149	211
Northwest County	36	\$73,492.00	114	263
Northeast County	28	\$81,779.00	74	251
Outside County	123	\$36,280.00	565	244

The data, charts, and graphs are for informational purposes only. Inwest Title Services, Inc. makes no representations that the information contained herein is complete, accurate or applicable to your individual circumstances.

Land/Acreage Sold

From Dec 1, 2017 to Dec 31, 2017 according to Washington
County Realtors Assoc.

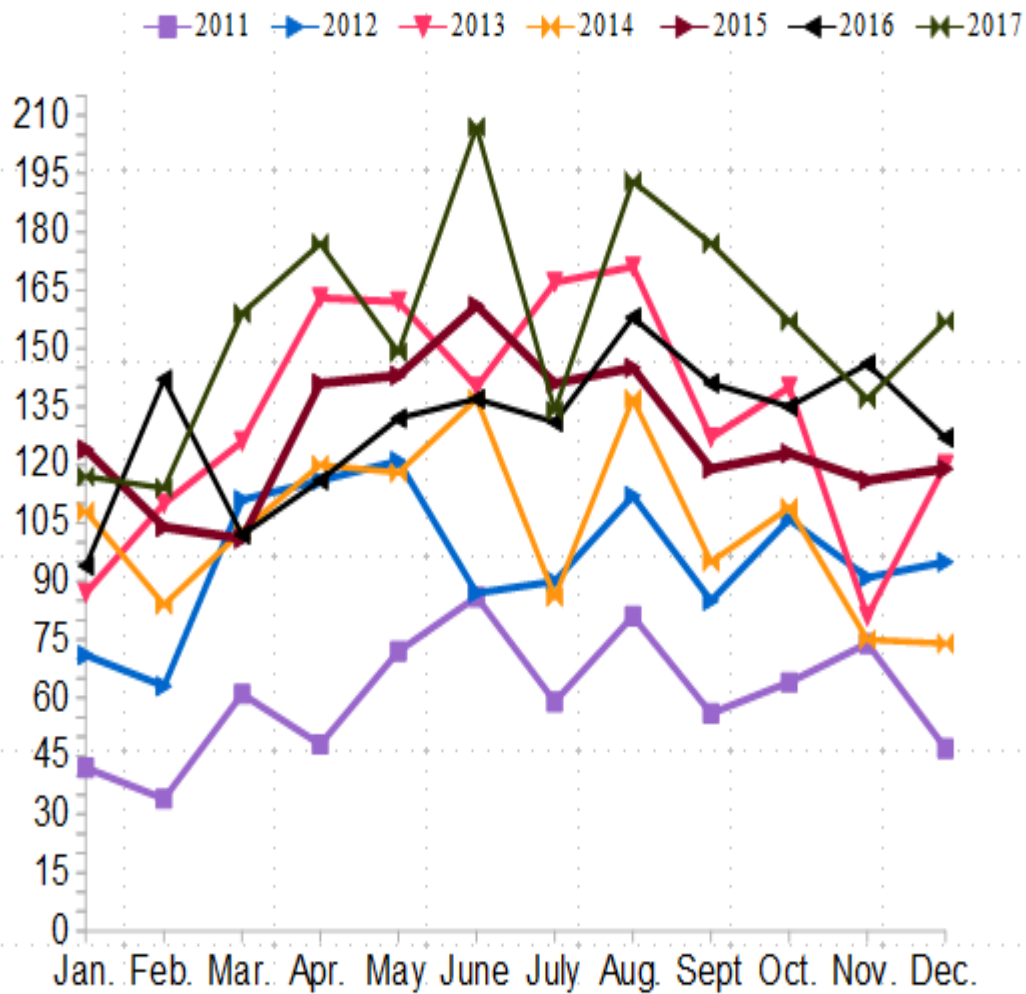
<i>Area</i>	<i># Sold</i>	<i>Avg. Sale Price</i>	<i>Total Active</i>	<i>Days On Market</i>
Greater St. George	5	\$489,516.00	80	309
Hurricane Valley	4	\$99,750.00	62	302
Zion Park	1	\$850,000.00	31	369
Northwest County	1	\$30,000.00	53	272
Northeast County	0	\$0.00	27	213
Outside County	5	\$34,850.00	339	339

From Jan. 1, 2017 to Dec 31, 2017 according to Washington
County Realtors Assoc.

<i>Area</i>	<i># Sold</i>	<i>Avg. Sale Price</i>	<i>Total Active</i>	<i>Days On Market</i>
Greater St. George	60	\$206,080.00	235	254
Hurricane Valley	53	\$146,973.00	172	232
Zion Park	9	\$259,978.00	55	318
Northwest County	15	\$36,740.00	99	267
Northeast County	16	\$154,975.00	61	232
Outside County	105	\$74,782.00	698	324

The data, charts, and graphs are for informational purposes only. Inwest Title Services, Inc. makes no representations that the information contained herein is complete, accurate or applicable to your individual circumstances.

Single Family Home Permits for Washington County per the Southwest Utah Construction Monitor



	2011	2012	2013	2014	2015	2016	2017
Categories	Y-Values	Y-Values	Y-Values	Y-Values	Y-Values	Y-Values	Y-Values
Jan.	42	71	87	108	124	94	117
Feb.	34	63	110	84	104	142	114
Mar.	61	111	126	103	101	102	159
Apr.	48	116	163	120	141	116	177
May	72	121	162	118	143	132	149
June	86	87	140	137	161	137	207
July	59	90	167	86	141	131	134
Aug.	81	112	171	137	145	158	193
Sept.	56	85	127	95	119	141	177
Oct.	64	106	140	109	123	135	157
Nov.	74	91	81	75	116	146	137
Dec.	47	95	120	74	119	127	157